

- Key**
- Centreline of Preferred 200m Pipeline Corridor
 - Indicative 50m Pipeline Corridor
 - Preferred 200m Pipeline Corridor
 - Least Constrained Termination Point Reservoir Site
 - Least Constrained Raw Water Abstraction Site
 - Least Constrained Water Treatment Plant Site
 - Least Constrained Break Pressure Tank Site

*Note :-
The Preferred 200m Pipeline Corridor and Indicative 50m Pipeline Corridor Have Been Determined Following an Iterative Process to Define the Least Constrained Pipe Alignment : Refer to Appendix I*

1	21/11/2016	For Issue	PW	CK	DS	MG
Rev.	Date	Purpose of revision	Drawn	Check'd	Rev'd	Appr'd

Client

Project

Water Supply Project - Eastern and Midlands Region

Drawing Title

Preferred 200m Pipeline Corridor and Indicative 50m Pipeline Corridor

Drawing Status

For Issue

Scale @ A3

1:6,500

DO NOT SCALE

Jacobs No.

32105801

Client No.

WSP1

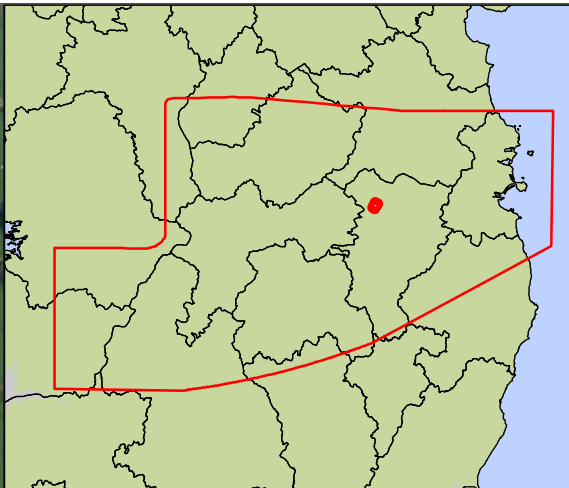
Filepath

C:\JACOBS\32105801\WSP\GIS\2016\11\21\32105801-FOAR-168.dwg

Drawing No.

32105801-FOAR-168

This drawing is not to be used in whole or in part other than for the intended purpose and project as defined on this drawing. Refer to the contract for full terms and conditions.



- Key**
- Centreline of Preferred 200m Pipeline Corridor
 - Indicative 50m Pipeline Corridor
 - Preferred 200m Pipeline Corridor
 - Least Constrained Termination Point Reservoir Site
 - Least Constrained Raw Water Abstraction Site
 - Least Constrained Water Treatment Plant Site
 - Least Constrained Break Pressure Tank Site

Note :-
The Preferred 200m Pipeline Corridor and Indicative 50m Pipeline Corridor Have Been Determined Following an Iterative Process to Define the Least Constrained Pipe Alignment : Refer to Appendix I

1	21/11/2016	For Issue	PW	CK	DS	MG
Rev.	Date	Purpose of revision	Drawn	Check'd	Rev'd	App'd

Client

Project

Water Supply Project - Eastern and Midlands Region

Drawing Title

Preferred 200m Pipeline Corridor and Indicative 50m Pipeline Corridor

Drawing Status

For Issue

Scale @ A3

1:6,500

DO NOT SCALE

Jacobs No.

32105801

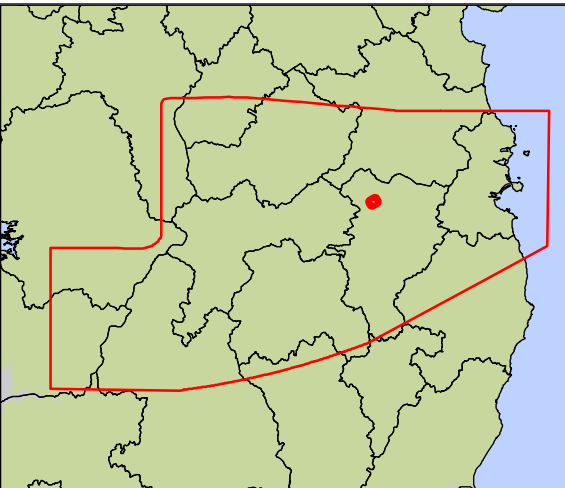
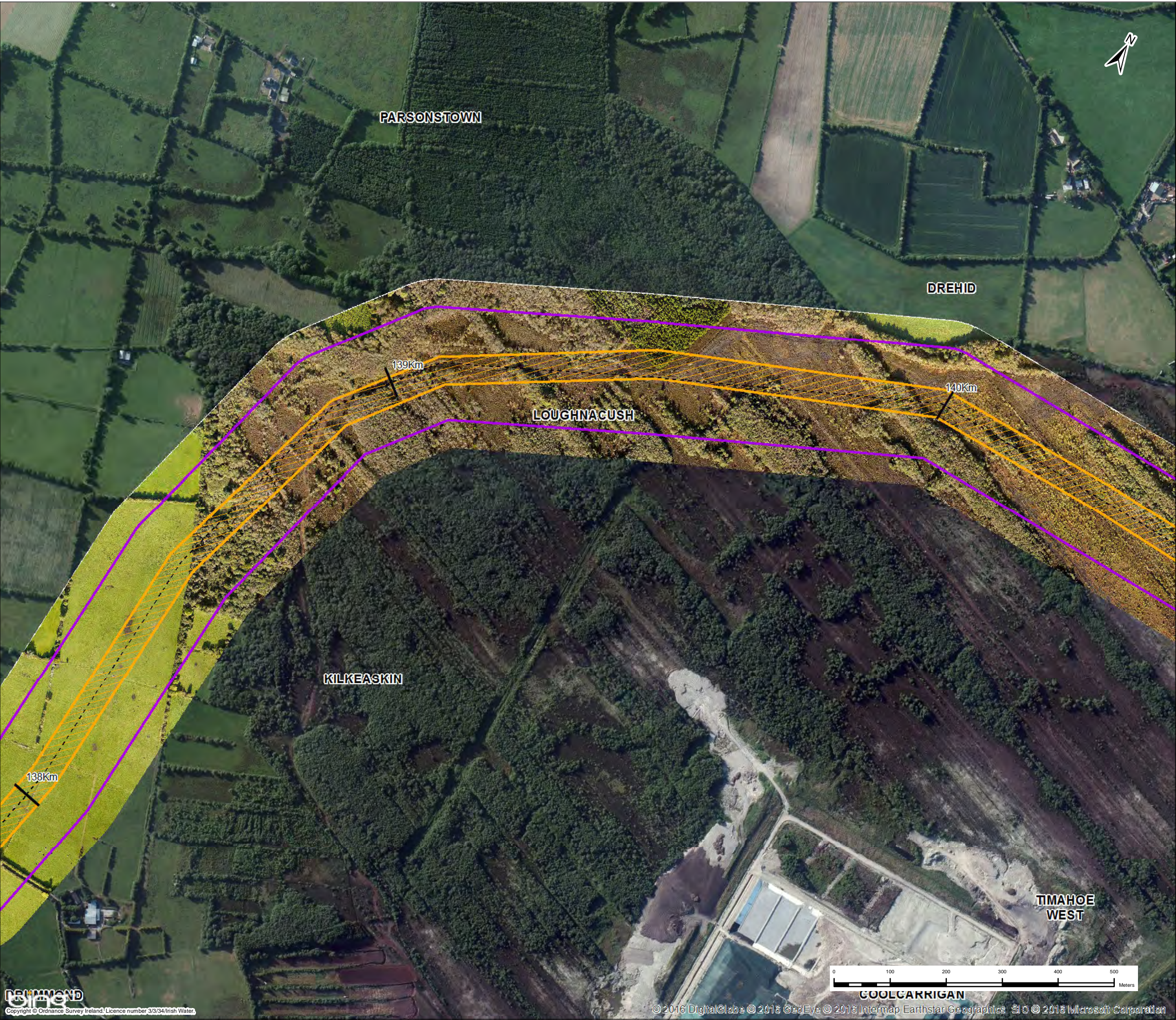
Client No.

WSP1

Drawing No.

32105801-FOAR-170

This drawing is not to be used in whole or in part other than for the intended purpose and project as defined on this drawing. Refer to the contract for full terms and conditions.



Key

- Centreline of Preferred 200m Pipeline Corridor
- Indicative 50m Pipeline Corridor
- Preferred 200m Pipeline Corridor
- Least Constrained Termination Point Reservoir Site
- Least Constrained Raw Water Abstraction Site
- Least Constrained Water Treatment Plant Site
- Least Constrained Break Pressure Tank Site

*Note :-
The Preferred 200m Pipeline Corridor and Indicative 50m Pipeline Corridor Have Been Determined Following an Iterative Process to Define the Least Constrained Pipe Alignment : Refer to Appendix I*

1	21/11/2016	For Issue	PW	CK	DS	MG
Rev.	Date	Purpose of revision	Drawn	Check'd	Rev'd	App'd

JACOBS


Patrick J. Tobin & Co. Ltd.

Client


UISCE
IRISH WATER

Project

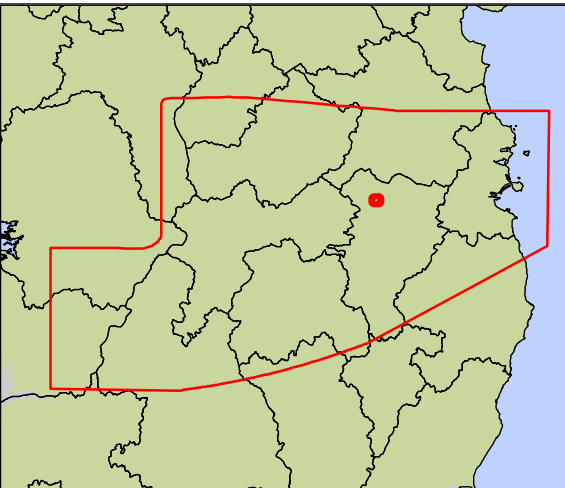
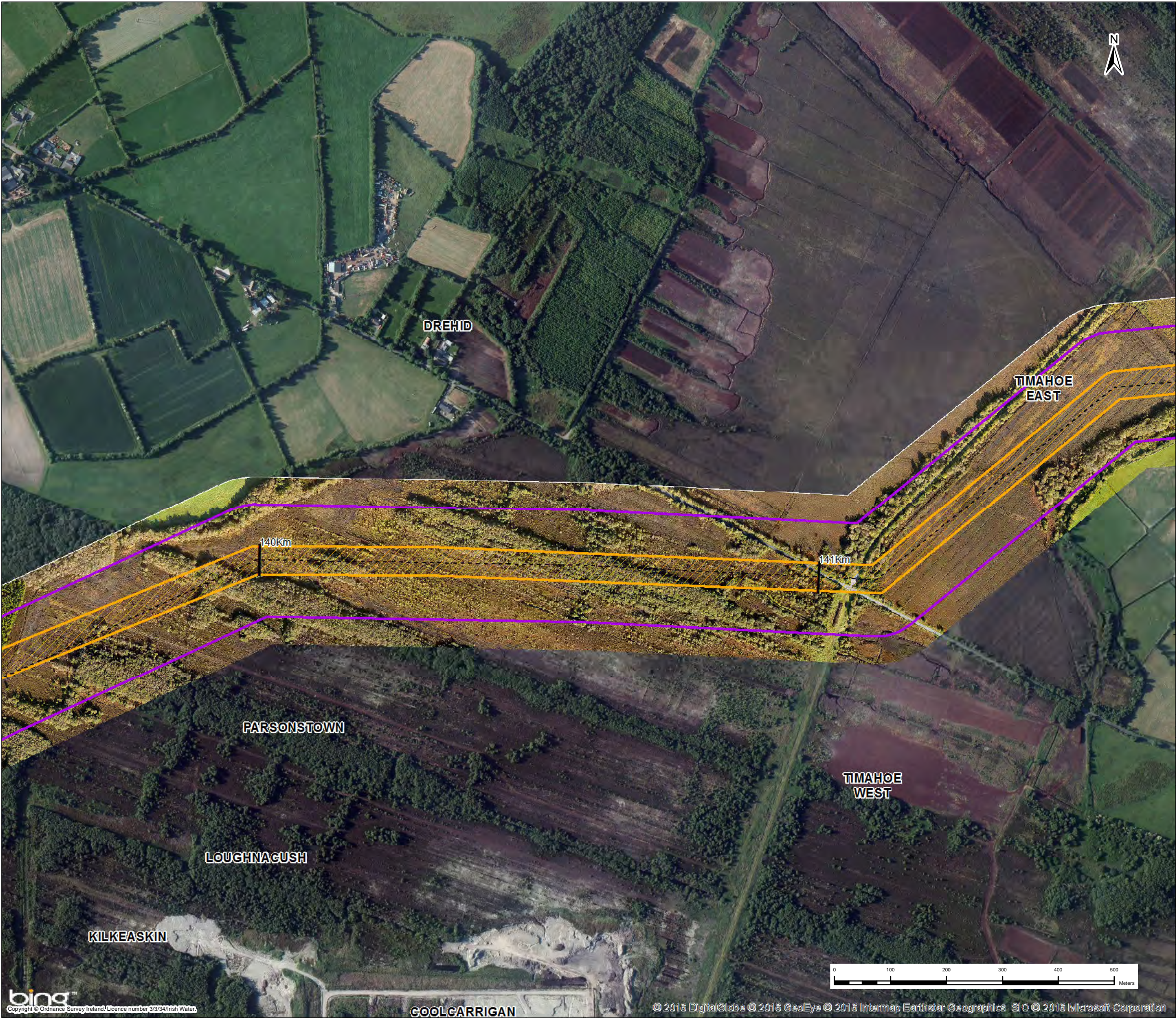
Water Supply Project - Eastern and Midlands Region

Drawing Title

Preferred 200m Pipeline Corridor and Indicative 50m Pipeline Corridor

Drawing Status	For Issue			DO NOT SCALE
Scale @ A3	1:6,500	Client No.	WSP1	
Jacobs No.	32105801			
Filepath	C:\GIS\2016\WSP\WSP-01000-Tobin\MainReport\Map\Preferred Corridor Corridor Map.dwg			
Drawing No.	32105801-FOAR-171			

This drawing is not to be used in whole or in part other than for the intended purpose and project as defined on this drawing. Refer to the contract for full terms and conditions.



- Key**
- Centreline of Preferred 200m Pipeline Corridor
 - Indicative 50m Pipeline Corridor
 - Preferred 200m Pipeline Corridor
 - Least Constrained Termination Point Reservoir Site
 - Least Constrained Raw Water Abstraction Site
 - Least Constrained Water Treatment Plant Site
 - Least Constrained Break Pressure Tank Site

*Note :-
The Preferred 200m Pipeline Corridor and Indicative 50m Pipeline Corridor Have Been Determined Following an Iterative Process to Define the Least Constrained Pipe Alignment : Refer to Appendix I*

1	21/11/2016	For Issue	PW	CK	DS	MG
Rev.	Date	Purpose of revision	Drawn	Check'd	Rev'd	App'd

JACOBS


Patrick J. Tobin & Co. Ltd.

Client


UISCE
IRISH WATER

Project
Water Supply Project - Eastern and Midlands Region

Drawing Title
Preferred 200m Pipeline Corridor and Indicative 50m Pipeline Corridor

Drawing Status
For Issue

Scale @ A3
1:6,500

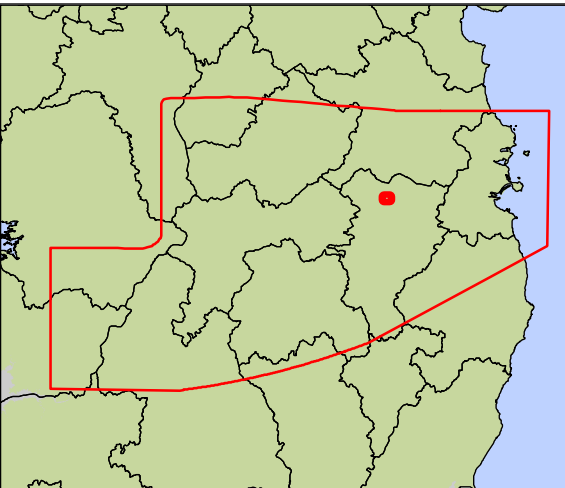
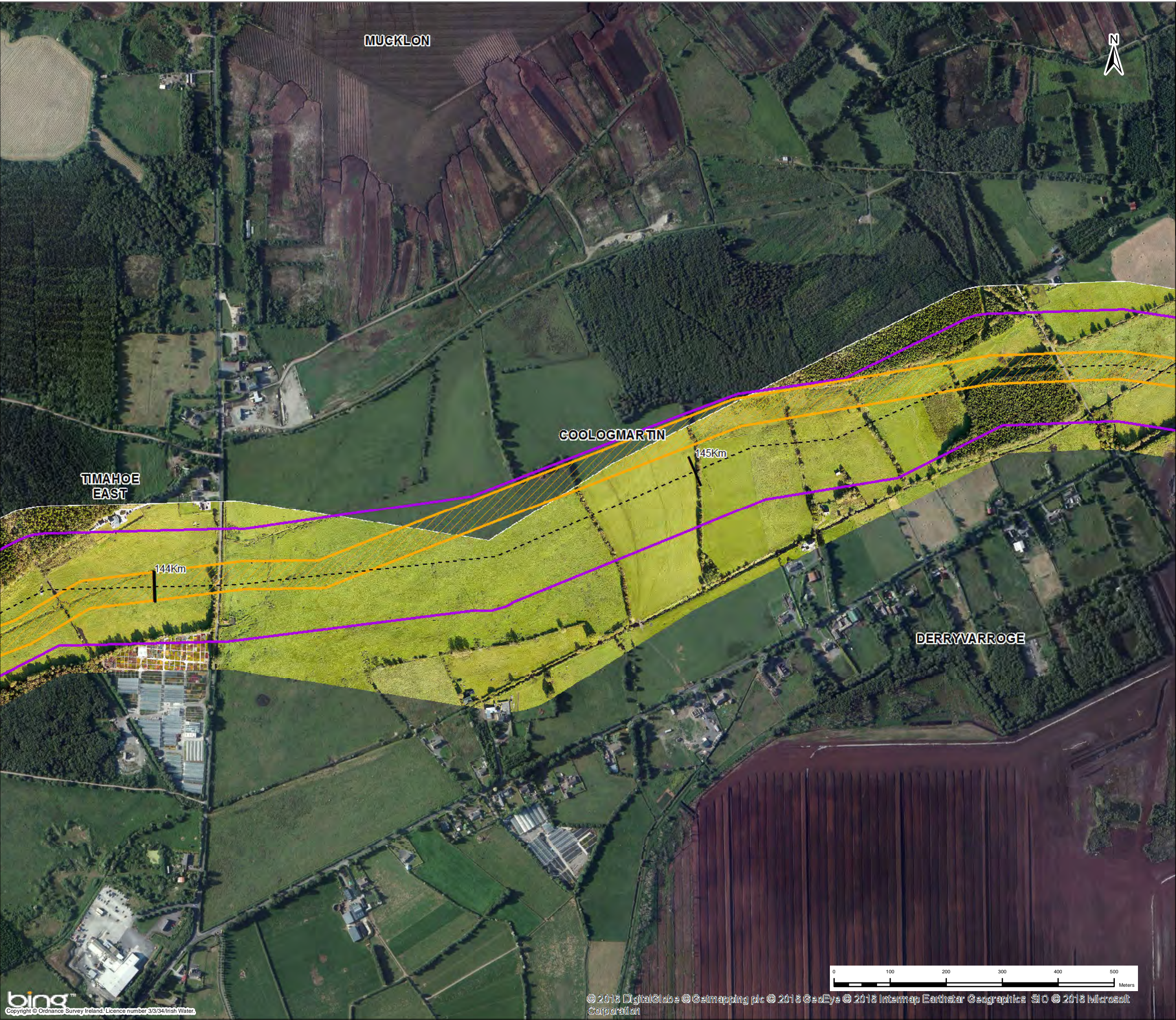
Jacobs No.
32105801

Client No.
WSP1

Drawing No.
32105801-FOAR-172

This drawing is not to be used in whole or in part other than for the intended purpose and project as defined on this drawing. Refer to the contract for full terms and conditions.





Key

- Centreline of Preferred 200m Pipeline Corridor
- Indicative 50m Pipeline Corridor
- Preferred 200m Pipeline Corridor
- Least Constrained Termination Point Reservoir Site
- Least Constrained Raw Water Abstraction Site
- Least Constrained Water Treatment Plant Site
- Least Constrained Break Pressure Tank Site

*Note :-
The Preferred 200m Pipeline Corridor and Indicative 50m Pipeline Corridor Have Been Determined Following an Iterative Process to Define the Least Constrained Pipe Alignment : Refer to Appendix I*

1	21/11/2016	For Issue	PW	CK	DS	MG
Rev.	Date	Purpose of revision	Drawn	Check'd	Rev'd	App'd

Client

Project

Water Supply Project - Eastern and Midlands Region

Drawing Title

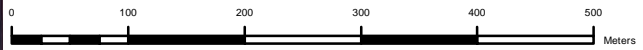
Preferred 200m Pipeline Corridor and Indicative 50m Pipeline Corridor

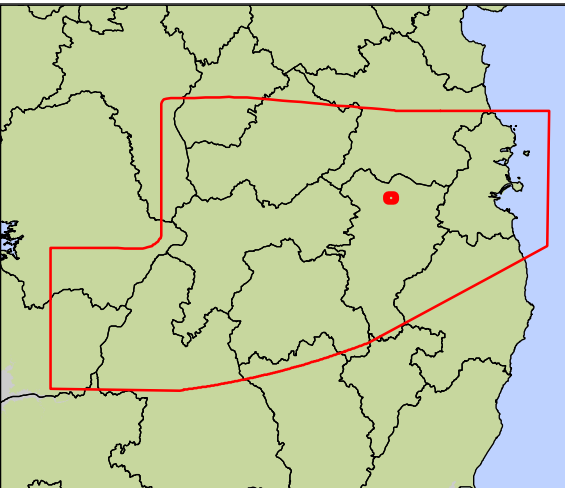
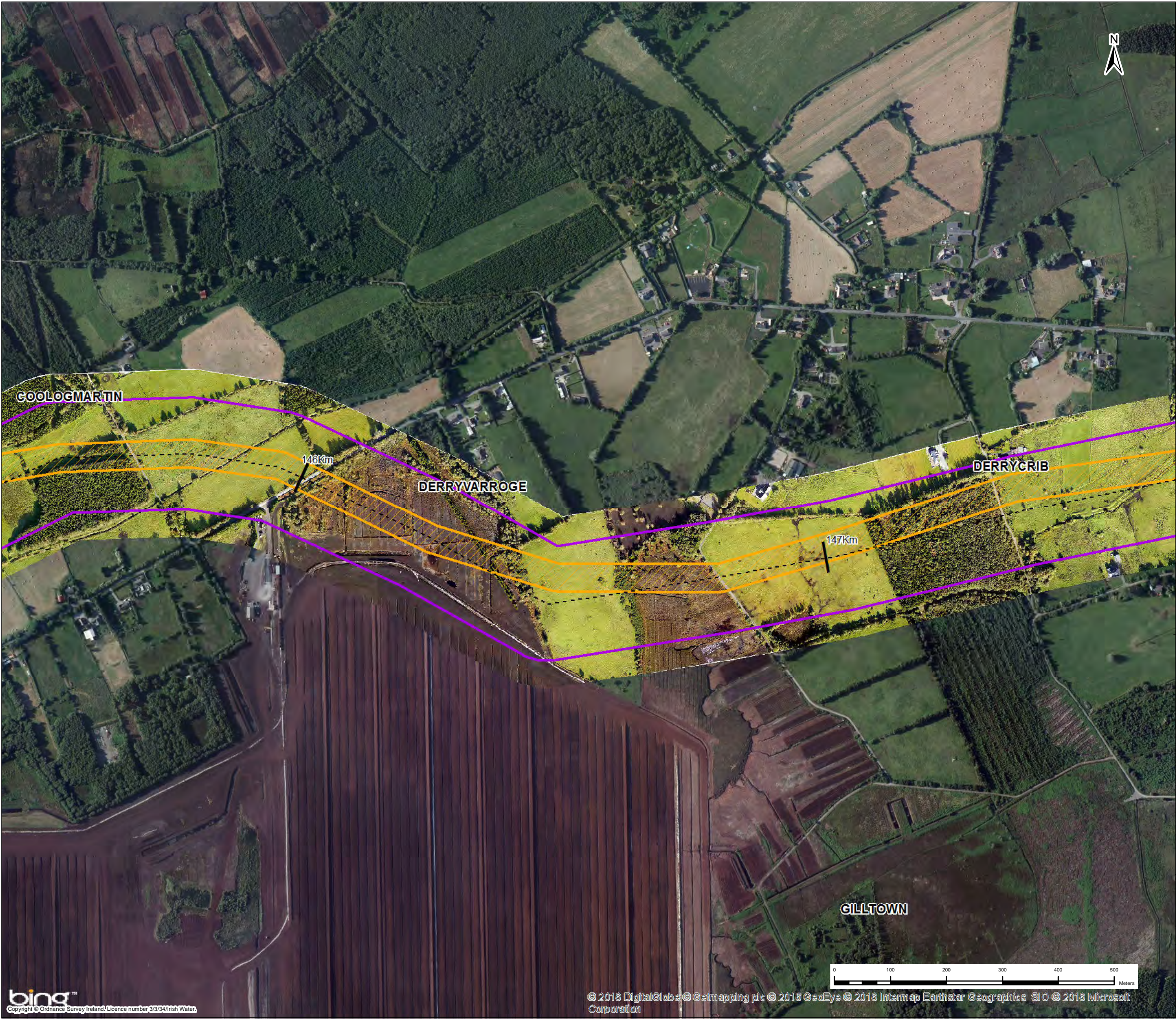
Drawing Status

For Issue

Scale @ A3	1:6,500	DO NOT SCALE	
Jacobs No.	32105801	Client No.	WSP1
Filepath			
Drawing No.			
32105801-FOAR-175			

This drawing is not to be used in whole or in part other than for the intended purpose and project as defined on this drawing. Refer to the contract for full terms and conditions.





- Key**
- Centreline of Preferred 200m Pipeline Corridor
 - Indicative 50m Pipeline Corridor
 - Preferred 200m Pipeline Corridor
 - Least Constrained Termination Point Reservoir Site
 - Least Constrained Raw Water Abstraction Site
 - Least Constrained Water Treatment Plant Site
 - Least Constrained Break Pressure Tank Site

Note :-
The Preferred 200m Pipeline Corridor and Indicative 50m Pipeline Corridor Have Been Determined Following an Iterative Process to Define the Least Constrained Pipe Alignment : Refer to Appendix I

1	21/11/2016	For Issue	PW	CK	DS	MG
Rev.	Date	Purpose of revision	Drawn	Check'd	Rev'd	App'd

Client

Project

Water Supply Project - Eastern and Midlands Region

Drawing Title

Preferred 200m Pipeline Corridor and Indicative 50m Pipeline Corridor

Drawing Status

For Issue

Scale @ A3

1:6,500

DO NOT SCALE

Jacobs No.

32105801

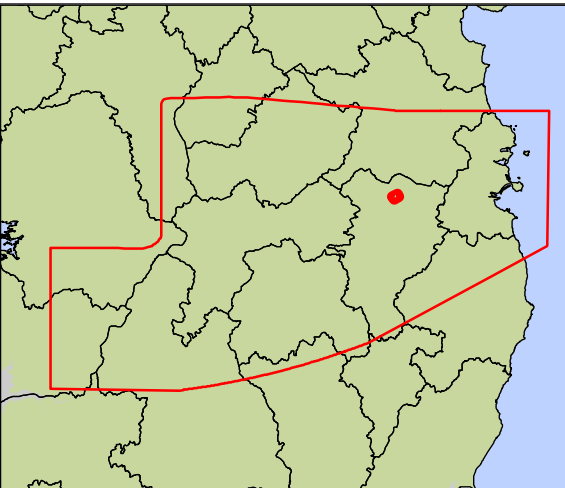
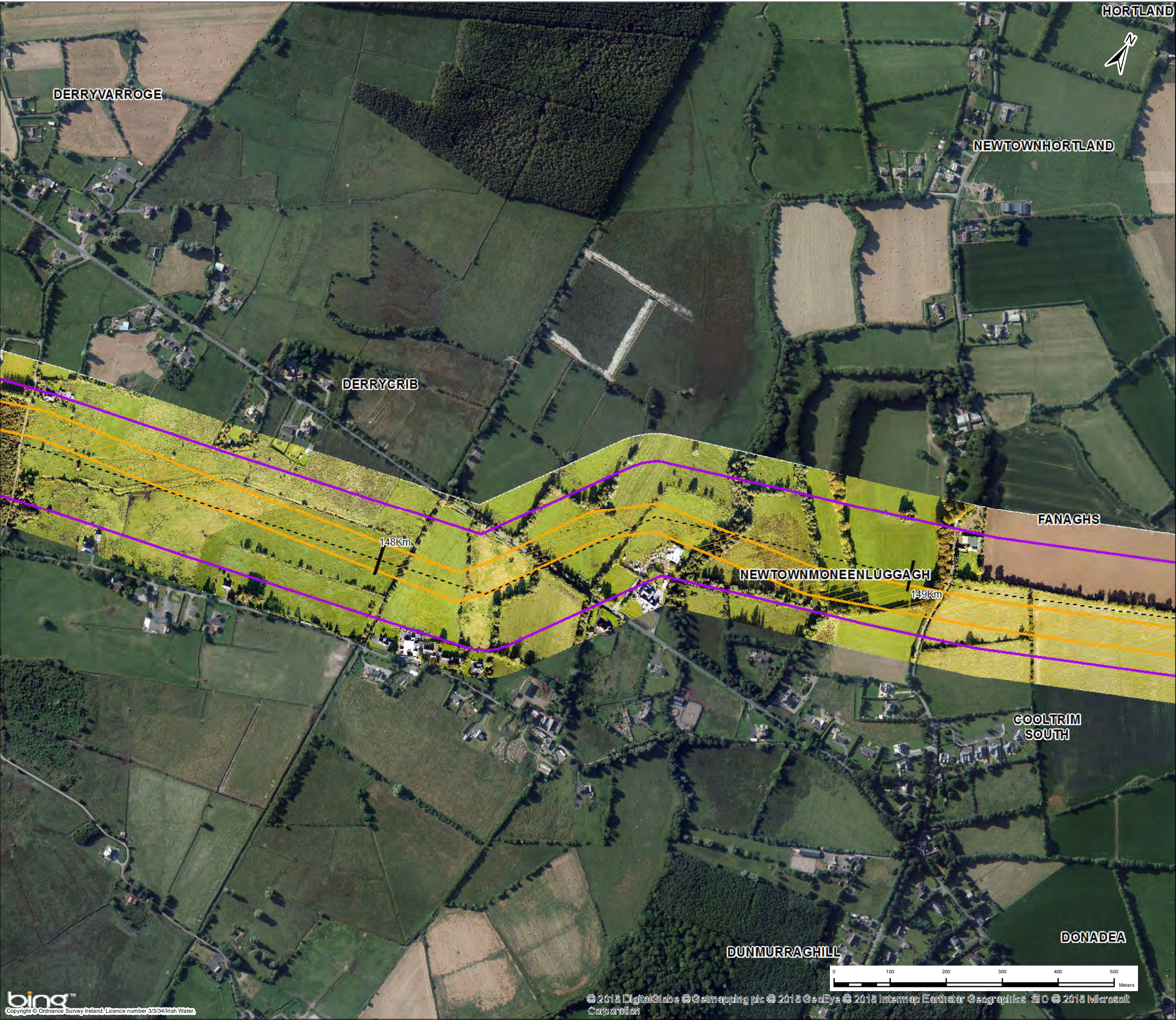
Client No.

WSP1

Filepath

32105801-FOAR-176

This drawing is not to be used in whole or in part other than for the intended purpose and project as defined on this drawing. Refer to the contract for full terms and conditions.






Key

- Centreline of Preferred 200m Pipeline Corridor
- Indicative 50m Pipeline Corridor
- Preferred 200m Pipeline Corridor
- Least Constrained Termination Point Reservoir Site
- Least Constrained Raw Water Abstraction Site
- Least Constrained Water Treatment Plant Site
- Least Constrained Break Pressure Tank Site

*Note :-
The Preferred 200m Pipeline Corridor and Indicative 50m Pipeline Corridor Have Been Determined Following an Iterative Process to Define the Least Constrained Pipe Alignment : Refer to Appendix I*

1	21/11/2016	For Issue	PW	CK	DS	MG
Rev.	Date	Purpose of revision	Drawn	Check'd	Rev'd	App'd





Client

Project

Water Supply Project - Eastern and Midlands Region

Drawing Title

Preferred 200m Pipeline Corridor and Indicative 50m Pipeline Corridor

Drawing Status

For Issue

Scale @ A3

1:6,500

DO NOT SCALE

Jacobs No.

32105801

Client No.

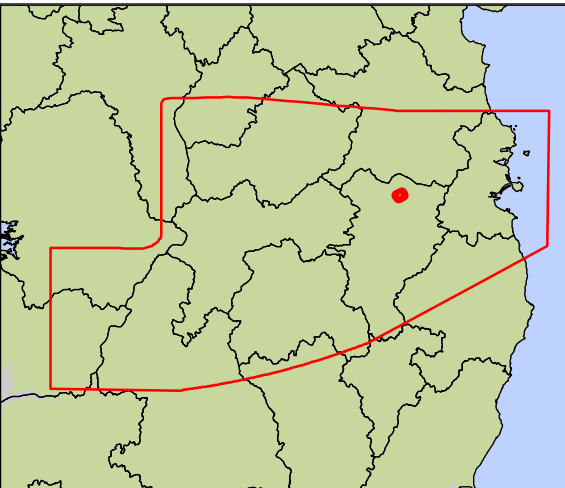
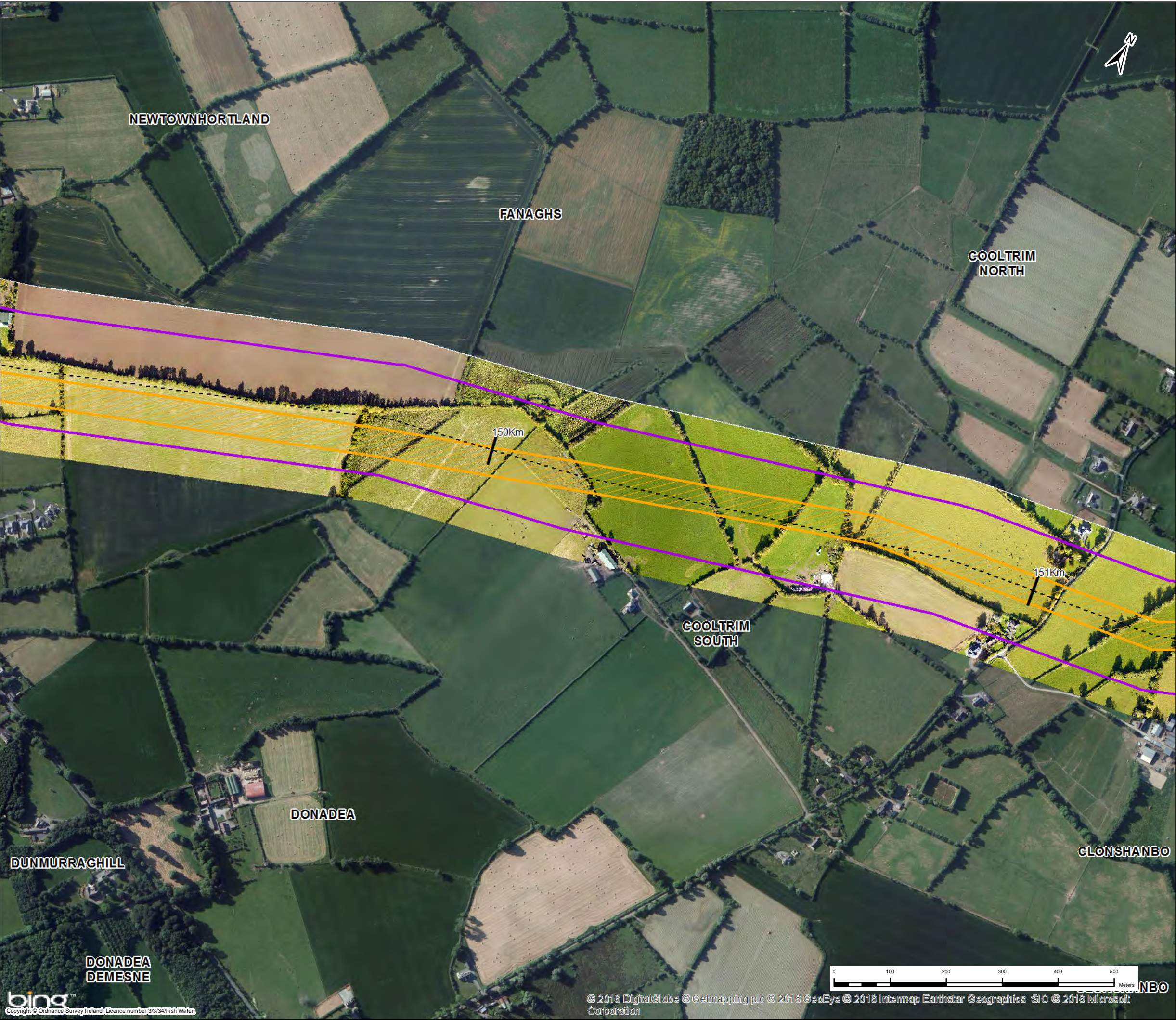
WSP1

Filepath

Drawing No.

32105801-FOAR-177

This drawing is not to be used in whole or in part other than for the intended purpose and project as defined on this drawing. Refer to the contract for full terms and conditions.



- Key**
- Centreline of Preferred 200m Pipeline Corridor
 - Indicative 50m Pipeline Corridor
 - Preferred 200m Pipeline Corridor
 - Least Constrained Termination Point Reservoir Site
 - Least Constrained Raw Water Abstraction Site
 - Least Constrained Water Treatment Plant Site
 - Least Constrained Break Pressure Tank Site

*Note :-
The Preferred 200m Pipeline Corridor and Indicative 50m Pipeline Corridor Have Been Determined Following an Iterative Process to Define the Least Constrained Pipe Alignment : Refer to Appendix I*

1	21/11/2016	For Issue	PW	CK	DS	MG
Rev.	Date	Purpose of revision	Drawn	Check'd	Rev'd	App'd

Client

Project

Water Supply Project - Eastern and Midlands Region

Drawing Title

Preferred 200m Pipeline Corridor and Indicative 50m Pipeline Corridor

Drawing Status

For Issue

Scale @ A3

1:6,500

DO NOT SCALE

Jacobs No.

32105801

Client No.

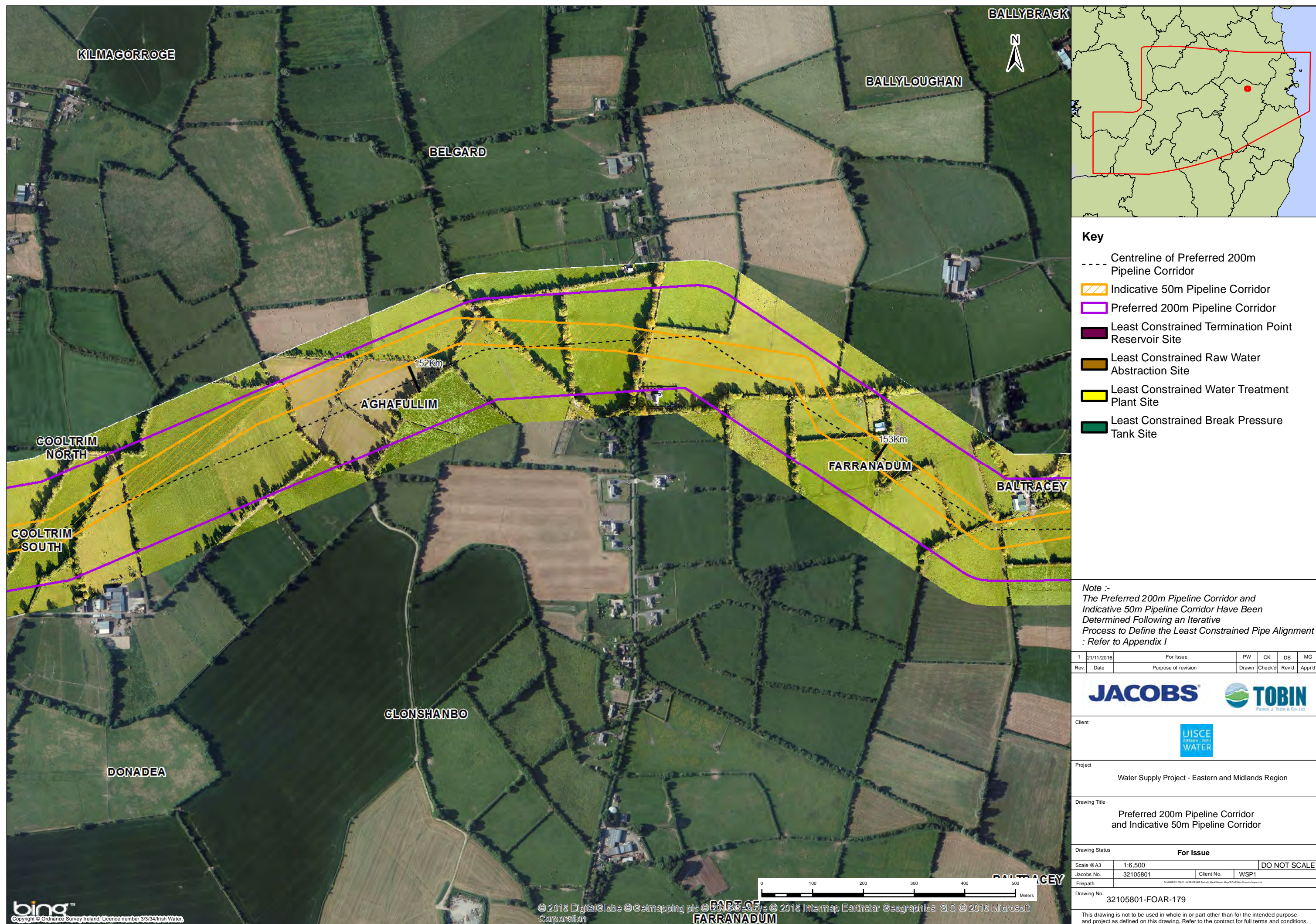
WSP1

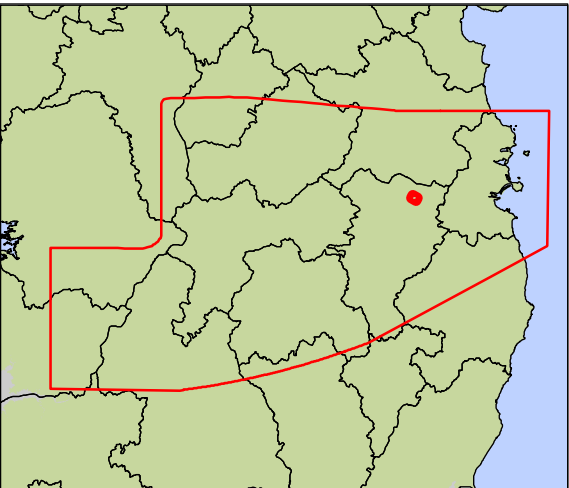
Filepath

Drawing No.

32105801-FOAR-178

This drawing is not to be used in whole or in part other than for the intended purpose and project as defined on this drawing. Refer to the contract for full terms and conditions.







Key


- Centreline of Preferred 200m Pipeline Corridor
- Indicative 50m Pipeline Corridor
- Preferred 200m Pipeline Corridor
- Least Constrained Termination Point Reservoir Site
- Least Constrained Raw Water Abstraction Site
- Least Constrained Water Treatment Plant Site
- Least Constrained Break Pressure Tank Site

*Note :-
The Preferred 200m Pipeline Corridor and Indicative 50m Pipeline Corridor Have Been Determined Following an Iterative Process to Define the Least Constrained Pipe Alignment : Refer to Appendix I*

1	21/11/2016	For Issue	PW	CK	DS	MG
Rev.	Date	Purpose of revision	Drawn	Check'd	Rev'd	App'd



Client



Project

Water Supply Project - Eastern and Midlands Region

Drawing Title

Preferred 200m Pipeline Corridor and Indicative 50m Pipeline Corridor

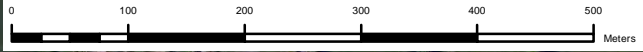
Drawing Status

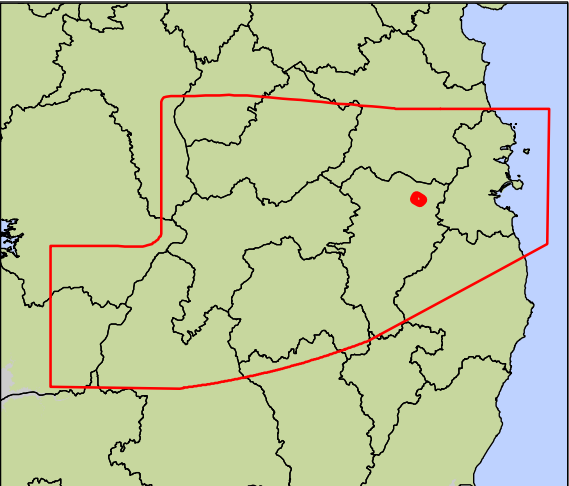
For Issue

Scale @ A3	1:6,500	DO NOT SCALE	
Jacobs No.	32105801	Client No.	WSP1
Filepath			
Drawing No.			

32105801-FOAR-181

This drawing is not to be used in whole or in part other than for the intended purpose and project as defined on this drawing. Refer to the contract for full terms and conditions.





- Key**
- Centreline of Preferred 200m Pipeline Corridor
 - Indicative 50m Pipeline Corridor
 - Preferred 200m Pipeline Corridor
 - Least Constrained Termination Point Reservoir Site
 - Least Constrained Raw Water Abstraction Site
 - Least Constrained Water Treatment Plant Site
 - Least Constrained Break Pressure Tank Site

*Note :-
The Preferred 200m Pipeline Corridor and Indicative 50m Pipeline Corridor Have Been Determined Following an Iterative Process to Define the Least Constrained Pipe Alignment : Refer to Appendix I*

1	21/11/2016	For Issue	PW	CK	DS	MG
Rev.	Date	Purpose of revision	Drawn	Check'd	Rev'd	App'd

Client

Project
Water Supply Project - Eastern and Midlands Region

Drawing Title
Preferred 200m Pipeline Corridor and Indicative 50m Pipeline Corridor

Drawing Status
For Issue

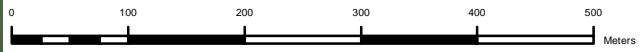
Scale @ A3
1:6,500

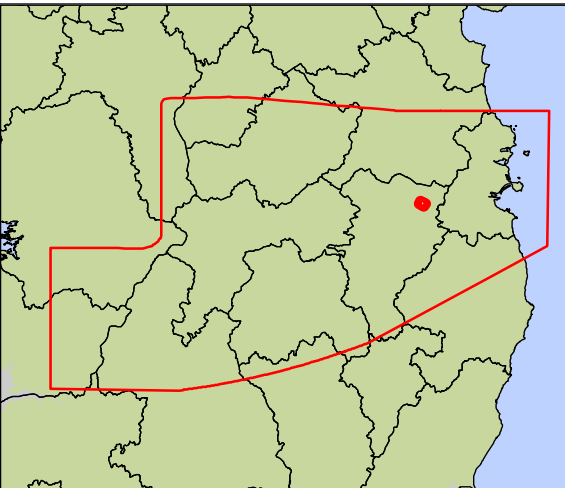
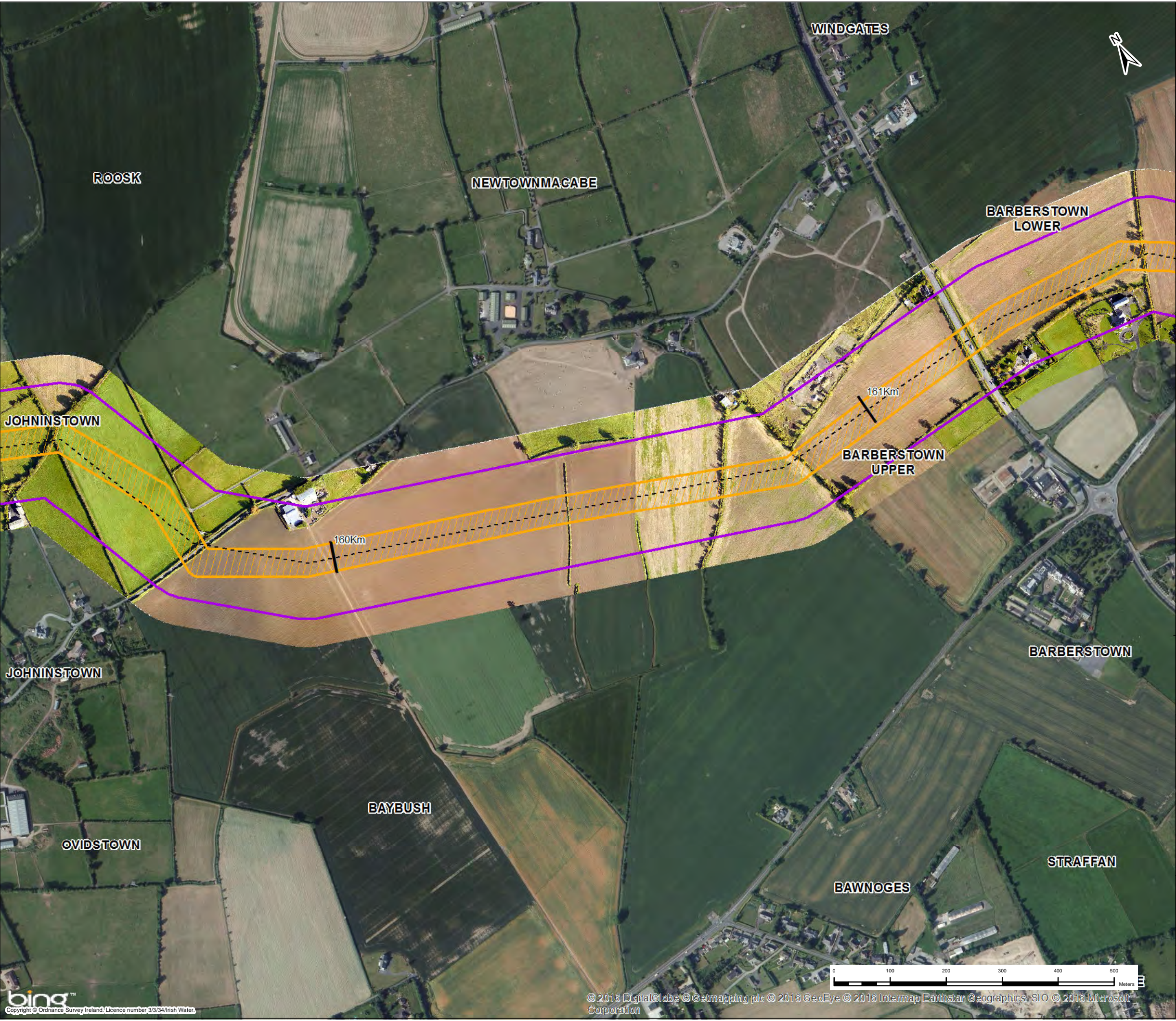
Jacobs No.
32105801

Client No.
WSP1

Drawing No.
32105801-FOAR-182

This drawing is not to be used in whole or in part other than for the intended purpose and project as defined on this drawing. Refer to the contract for full terms and conditions.





Key

- Centreline of Preferred 200m Pipeline Corridor
- Indicative 50m Pipeline Corridor
- Preferred 200m Pipeline Corridor
- Least Constrained Termination Point Reservoir Site
- Least Constrained Raw Water Abstraction Site
- Least Constrained Water Treatment Plant Site
- Least Constrained Break Pressure Tank Site

*Note :-
The Preferred 200m Pipeline Corridor and Indicative 50m Pipeline Corridor Have Been Determined Following an Iterative Process to Define the Least Constrained Pipe Alignment : Refer to Appendix I*

1	21/11/2016	For Issue	PW	CK	DS	MG
Rev.	Date	Purpose of revision	Drawn	Check'd	Rev'd	App'd

JACOBS


Patrick J. Tobin & Co. Ltd.

Client


UISCE
Uisce Éireann
Irish Water

Project

Water Supply Project - Eastern and Midlands Region

Drawing Title

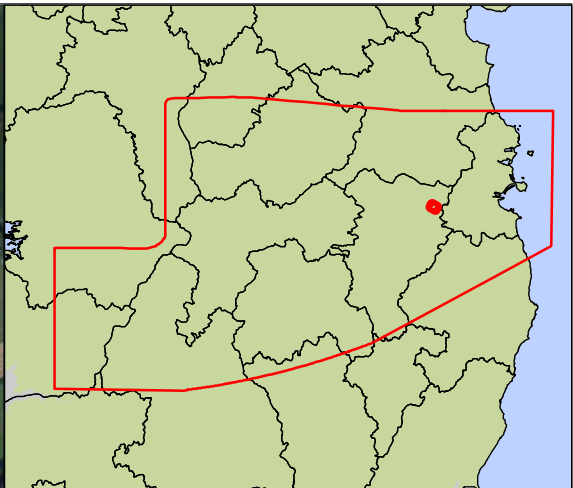
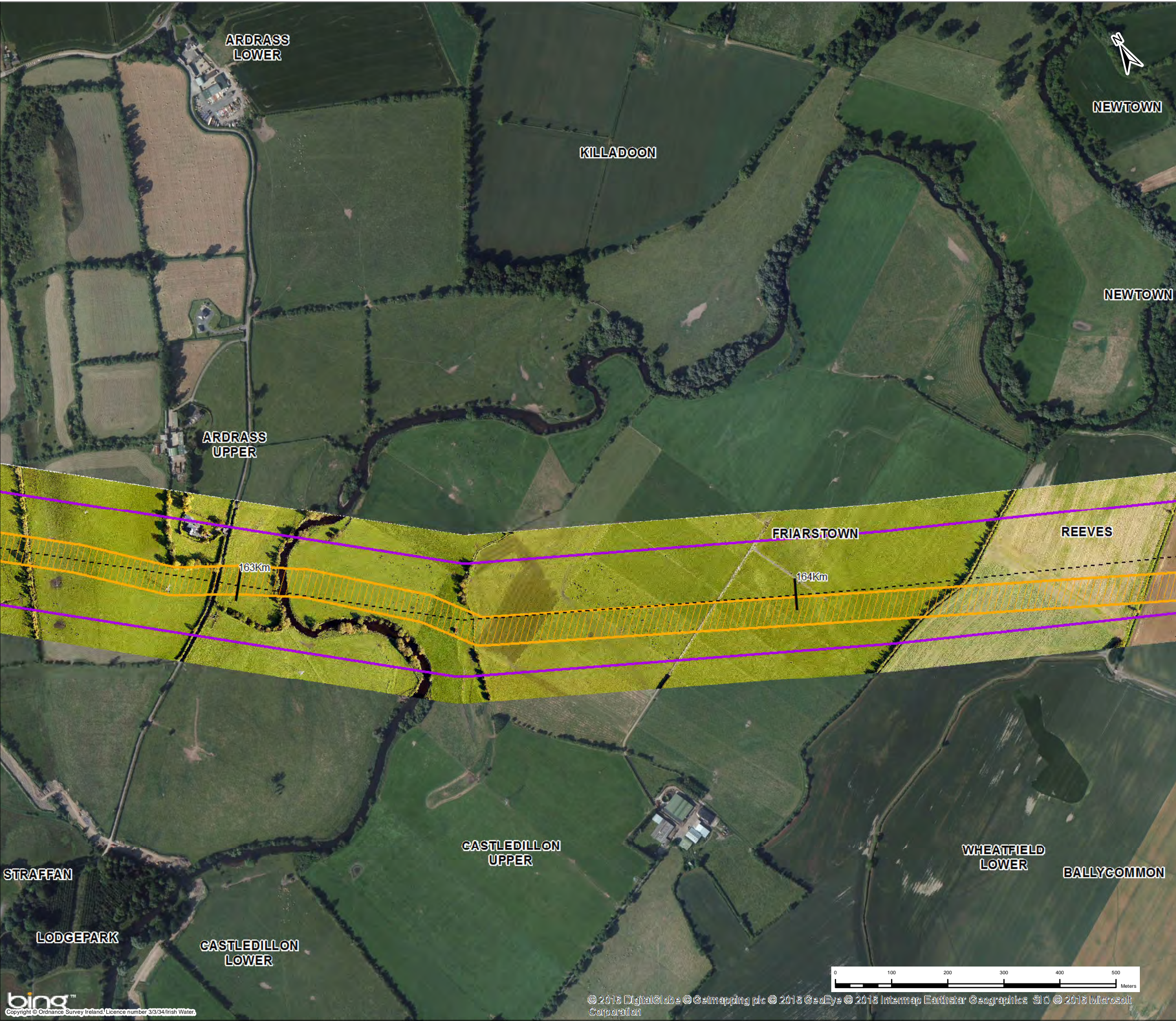
Preferred 200m Pipeline Corridor and Indicative 50m Pipeline Corridor

Drawing Status

For Issue

Scale @ A3	1:6,500	DO NOT SCALE	
Jacobs No.	32105801	Client No.	WSP1
Filepath			
Drawing No.			
32105801-FOAR-183			

This drawing is not to be used in whole or in part other than for the intended purpose and project as defined on this drawing. Refer to the contract for full terms and conditions.



- Key**
- Centreline of Preferred 200m Pipeline Corridor
 - Indicative 50m Pipeline Corridor
 - Preferred 200m Pipeline Corridor
 - Least Constrained Termination Point Reservoir Site
 - Least Constrained Raw Water Abstraction Site
 - Least Constrained Water Treatment Plant Site
 - Least Constrained Break Pressure Tank Site

*Note :-
The Preferred 200m Pipeline Corridor and Indicative 50m Pipeline Corridor Have Been Determined Following an Iterative Process to Define the Least Constrained Pipe Alignment : Refer to Appendix I*

1	21/11/2016	For Issue	PW	CK	DS	MG
Rev.	Date	Purpose of revision	Drawn	Check'd	Rev'd	Appr'd

Client

Project

Water Supply Project - Eastern and Midlands Region

Drawing Title

Preferred 200m Pipeline Corridor and Indicative 50m Pipeline Corridor

Drawing Status

For Issue

Scale @ A3

1:6,500

DO NOT SCALE

Jacobs No.

32105801

Client No.

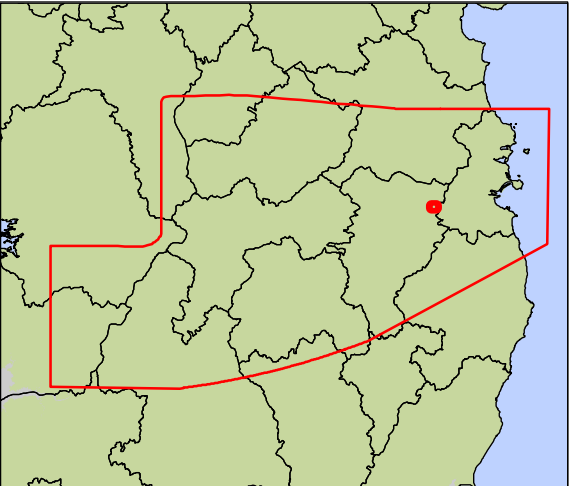
WSP1

Filepath

Drawing No.

32105801-FOAR-185

This drawing is not to be used in whole or in part other than for the intended purpose and project as defined on this drawing. Refer to the contract for full terms and conditions.



Key

- Centreline of Preferred 200m Pipeline Corridor
- Indicative 50m Pipeline Corridor
- Preferred 200m Pipeline Corridor
- Least Constrained Termination Point Reservoir Site
- Least Constrained Raw Water Abstraction Site
- Least Constrained Water Treatment Plant Site
- Least Constrained Break Pressure Tank Site

*Note :-
The Preferred 200m Pipeline Corridor and Indicative 50m Pipeline Corridor Have Been Determined Following an Iterative Process to Define the Least Constrained Pipe Alignment : Refer to Appendix I*

1	21/11/2016	For Issue	PW	CK	DS	MG
Rev.	Date	Purpose of revision	Drawn	Check'd	Rev'd	App'd

JACOBS


Patrick J. Tobin & Co. Ltd.

Client


UISCE
IRISH WATER

Project

Water Supply Project - Eastern and Midlands Region

Drawing Title

Preferred 200m Pipeline Corridor and Indicative 50m Pipeline Corridor

Drawing Status

For Issue

Scale @ A3

1:6,500

DO NOT SCALE

Jacobs No.

32105801

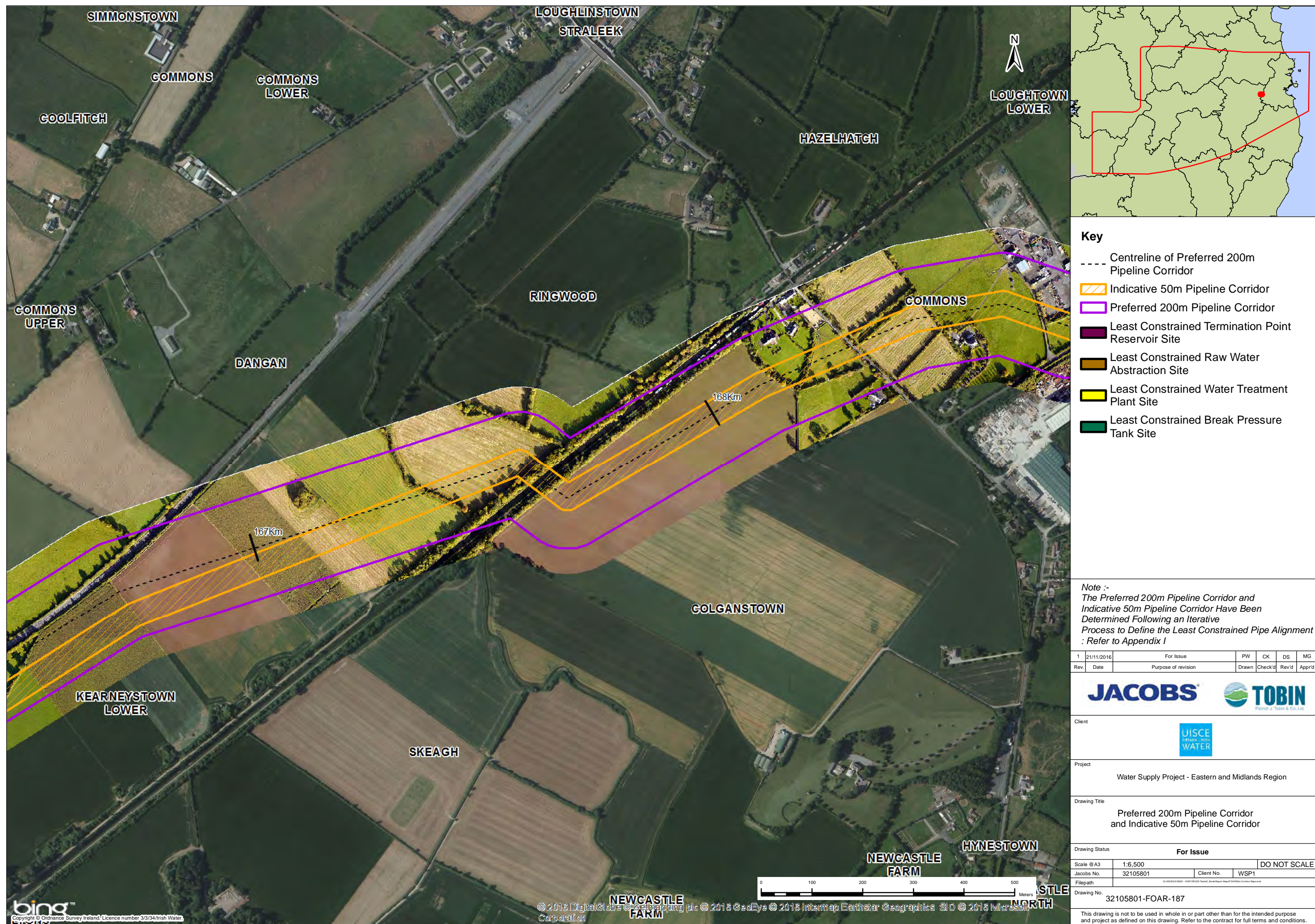
Client No.

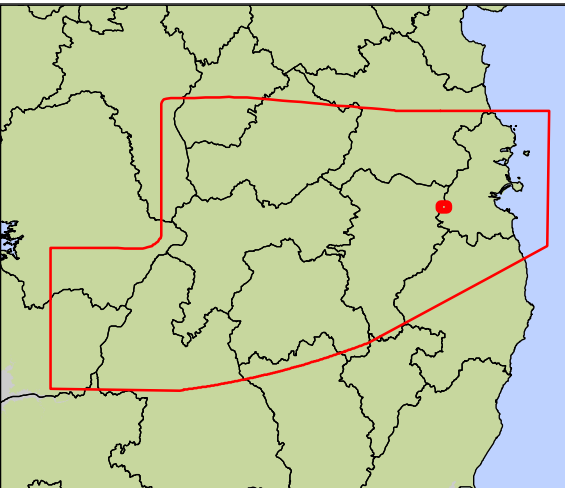
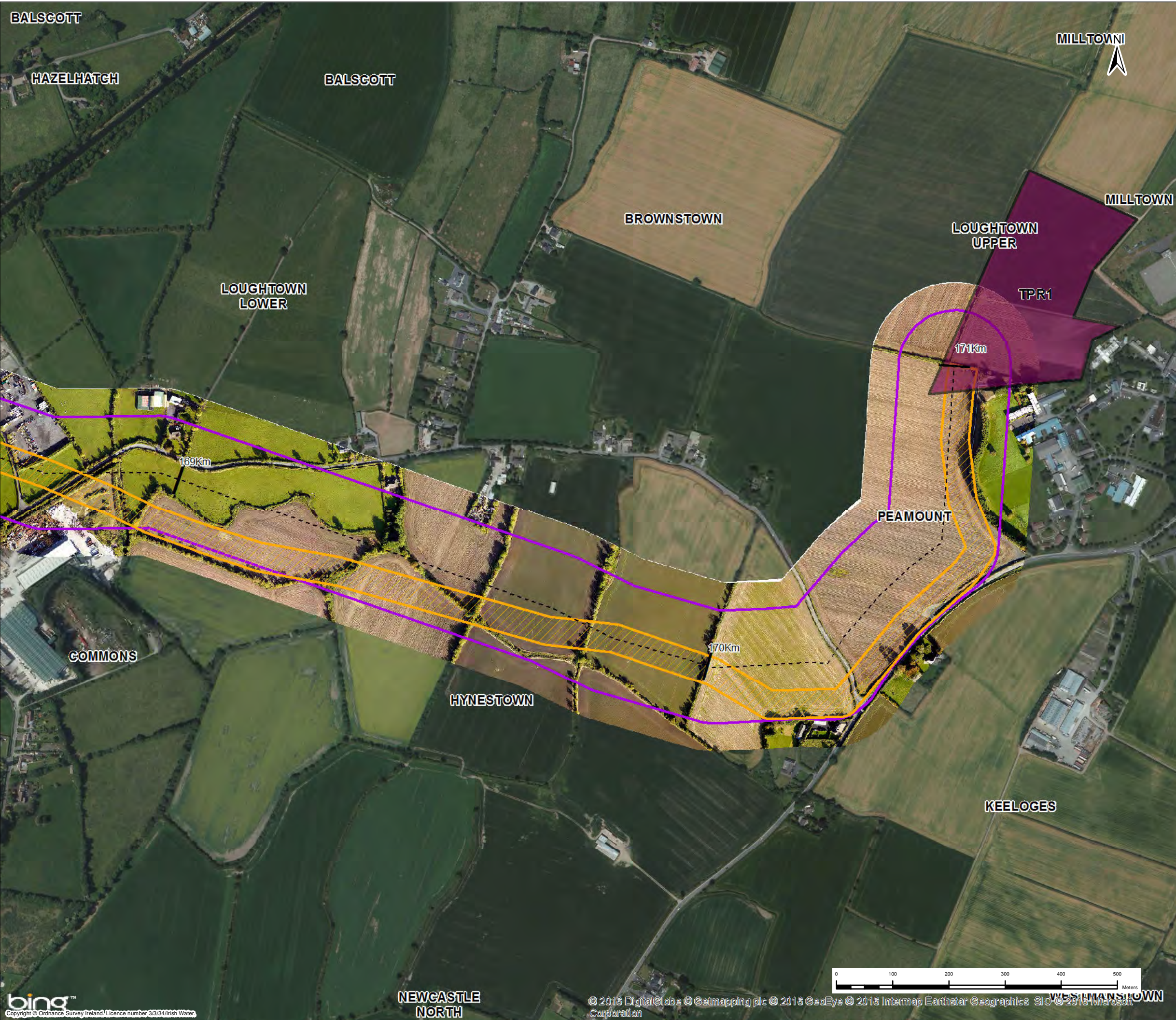
WSP1

Drawing No.

32105801-FOAR-186

This drawing is not to be used in whole or in part other than for the intended purpose and project as defined on this drawing. Refer to the contract for full terms and conditions.





- Key**
- Centreline of Preferred 200m Pipeline Corridor
 - Indicative 50m Pipeline Corridor
 - Preferred 200m Pipeline Corridor
 - Least Constrained Termination Point Reservoir Site
 - Least Constrained Raw Water Abstraction Site
 - Least Constrained Water Treatment Plant Site
 - Least Constrained Break Pressure Tank Site

Note :-
The Preferred 200m Pipeline Corridor and Indicative 50m Pipeline Corridor Have Been Determined Following an Iterative Process to Define the Least Constrained Pipe Alignment : Refer to Appendix I

1	21/11/2016	For Issue	PW	CK	DS	MG
Rev.	Date	Purpose of revision	Drawn	Check'd	Rev'd	App'd

Client

Project

Water Supply Project - Eastern and Midlands Region

Drawing Title

Preferred 200m Pipeline Corridor and Indicative 50m Pipeline Corridor

Drawing Status

For Issue

Scale @ A3

1:6,500

DO NOT SCALE

Jacobs No.

32105801

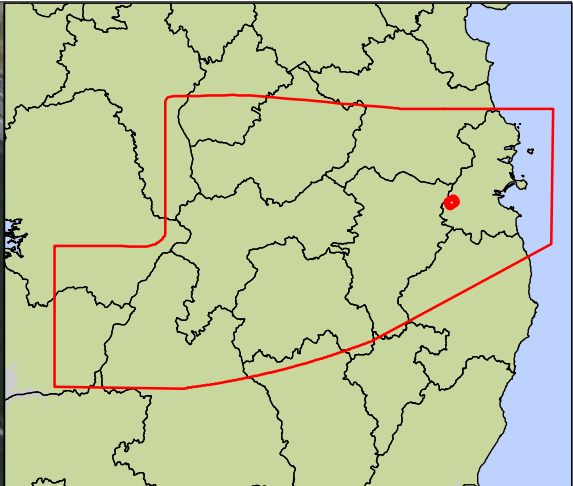
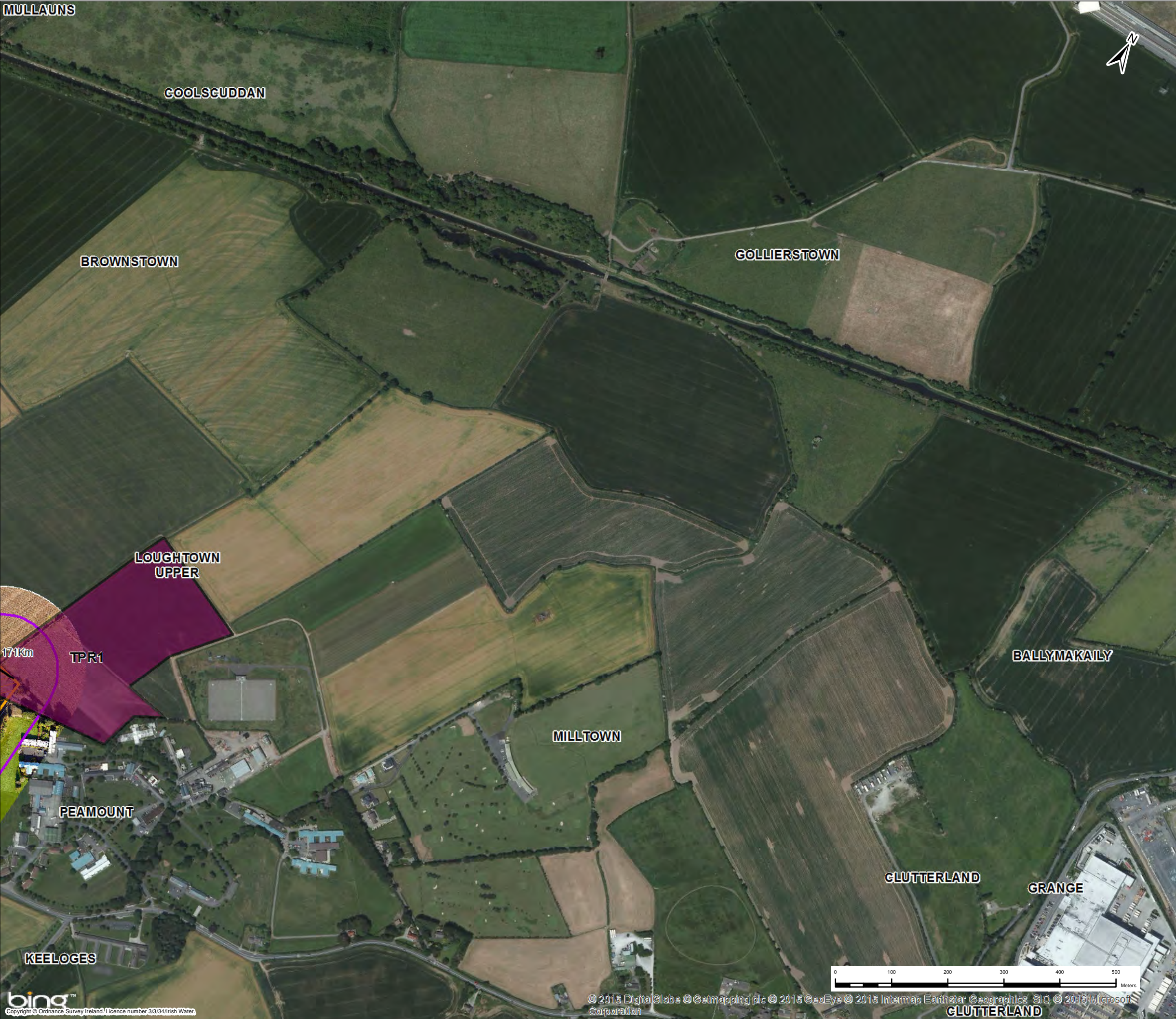
Client No.

WSP1

Drawing No.

32105801-FOAR-188

This drawing is not to be used in whole or in part other than for the intended purpose and project as defined on this drawing. Refer to the contract for full terms and conditions.



Key

- Centreline of Preferred 200m Pipeline Corridor
- Indicative 50m Pipeline Corridor
- Preferred 200m Pipeline Corridor
- Least Constrained Termination Point Reservoir Site
- Least Constrained Raw Water Abstraction Site
- Least Constrained Water Treatment Plant Site
- Least Constrained Break Pressure Tank Site

*Note :-
The Preferred 200m Pipeline Corridor and Indicative 50m Pipeline Corridor Have Been Determined Following an Iterative Process to Define the Least Constrained Pipe Alignment : Refer to Appendix I*

1	21/11/2016	For Issue	PW	CK	DS	MG
Rev.	Date	Purpose of revision	Drawn	Check'd	Rev'd	App'd

Client

Project

Water Supply Project - Eastern and Midlands Region

Drawing Title

Preferred 200m Pipeline Corridor and Indicative 50m Pipeline Corridor

Drawing Status		For Issue		
Scale @ A3	1:6,500			DO NOT SCALE
Jacobs No.	32105801	Client No.	WSP1	
Filepath	C:\GIS\GIS\32105801 - WSP\32105801_Taxlot_MatRequest\Map\32105801-FOAR-189.mxd			
Drawing No.	32105801-FOAR-189			

This drawing is not to be used in whole or in part other than for the intended purpose and project as defined on this drawing. Refer to the contract for full terms and conditions.