

- Key**
- Centreline of Preferred 200m Pipeline Corridor
  - Indicative 50m Pipeline Corridor
  - Preferred 200m Pipeline Corridor
  - Least Constrained Termination Point Reservoir Site
  - Least Constrained Raw Water Abstraction Site
  - Least Constrained Water Treatment Plant Site
  - Least Constrained Break Pressure Tank Site

**Note :-**  
The Preferred 200m Pipeline Corridor and Indicative 50m Pipeline Corridor Have Been Determined Following an Iterative Process to Define the Least Constrained Pipe Alignment : Refer to Appendix I

1	21/11/2016	For Issue	PW	CK	DS	MG
Rev.	Date	Purpose of revision	Drawn	Check'd	Rev'd	Appr'd

Client

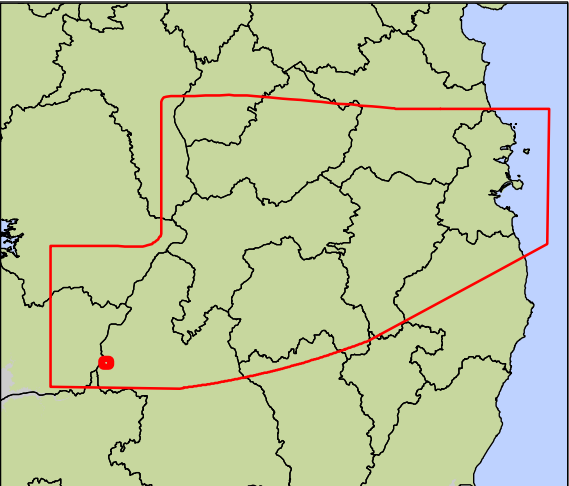
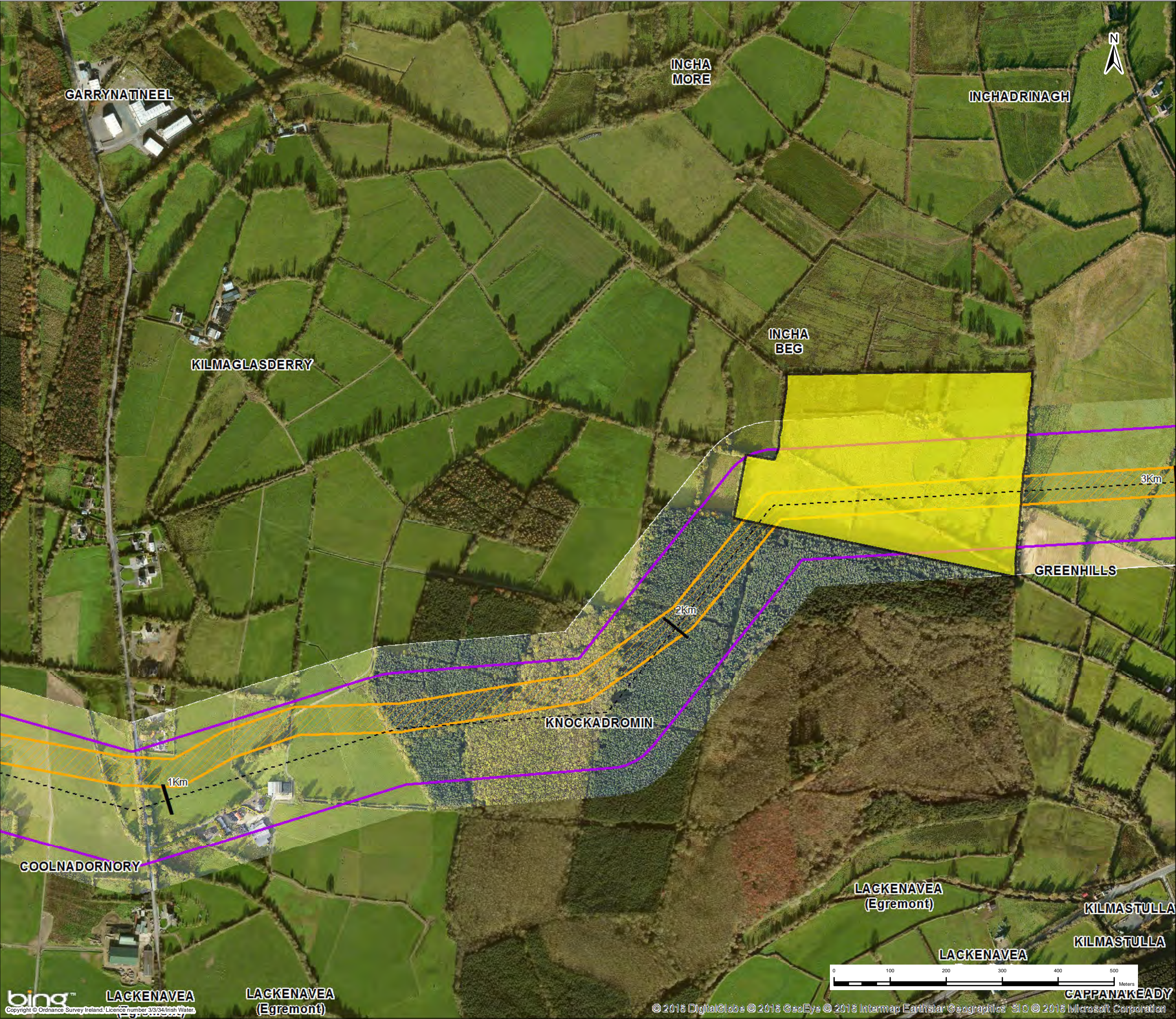
Project  
Water Supply Project - Eastern and Midlands Region

Drawing Title  
Preferred 200m Pipeline Corridor and Indicative 50m Pipeline Corridor

Drawing Status	For Issue		
Scale @ A3	1:6,500	DO NOT SCALE	
Jacobs No.	32105801	Client No.	WSP1
Filepath	C:\GIS\2016\WSP\WSP-01000\Tobin\32105801-WSP-01000-001.dwg		
Drawing No.	32105801-FOAR-100		

This drawing is not to be used in whole or in part other than for the intended purpose and project as defined on this drawing. Refer to the contract for full terms and conditions.





**Key**

- Centreline of Preferred 200m Pipeline Corridor
- Indicative 50m Pipeline Corridor
- Preferred 200m Pipeline Corridor
- Least Constrained Termination Point Reservoir Site
- Least Constrained Raw Water Abstraction Site
- Least Constrained Water Treatment Plant Site
- Least Constrained Break Pressure Tank Site

*Note :-  
The Preferred 200m Pipeline Corridor and Indicative 50m Pipeline Corridor Have Been Determined Following an Iterative Process to Define the Least Constrained Pipe Alignment : Refer to Appendix I*

1	21/11/2016	For Issue	PW	CK	DS	MG
Rev.	Date	Purpose of revision	Drawn	Check'd	Rev'd	App'd

JACOBS

  
Patrick J. Tobin & Co. Ltd.

Client

  
UISCE  
IRISH WATER

Project

Water Supply Project - Eastern and Midlands Region

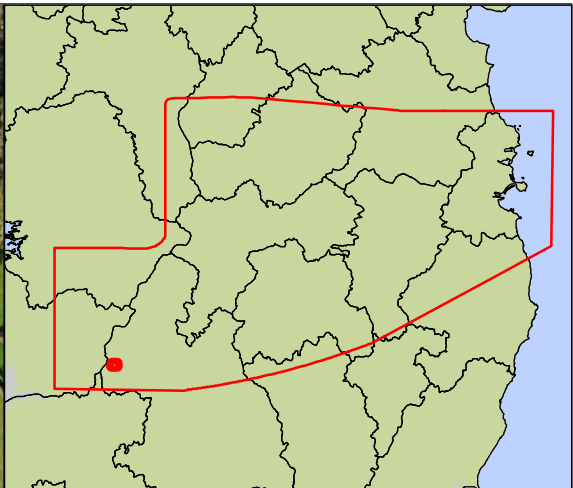
Drawing Title

Preferred 200m Pipeline Corridor and Indicative 50m Pipeline Corridor

Drawing Status		For Issue			
Scale @ A3	1:6,500				DO NOT SCALE
Jacobs No.	32105801	Client No.	WSP1		
Filepath	G:\02\0217\0201 - WSP\020102\Titled - 30x40\Report\Report\02010201-02010201.dwg				
Drawing No.	32105801-FOAR-101				

This drawing is not to be used in whole or in part other than for the intended purpose and project as defined on this drawing. Refer to the contract for full terms and conditions.





**Key**

- Centreline of Preferred 200m Pipeline Corridor
- Indicative 50m Pipeline Corridor
- Preferred 200m Pipeline Corridor
- Least Constrained Termination Point Reservoir Site
- Least Constrained Raw Water Abstraction Site
- Least Constrained Water Treatment Plant Site
- Least Constrained Break Pressure Tank Site

*Note :-  
The Preferred 200m Pipeline Corridor and Indicative 50m Pipeline Corridor Have Been Determined Following an Iterative Process to Define the Least Constrained Pipe Alignment : Refer to Appendix I*

1	21/11/2016	For Issue	PW	CK	DS	MG
Rev.	Date	Purpose of revision	Drawn	Check'd	Rev'd	App'd

JACOBS

  
Patrick J. Tobin & Co. Ltd.

Client

  
UISCE  
Uisce Éireann  
Irish Water

Project

Water Supply Project - Eastern and Midlands Region

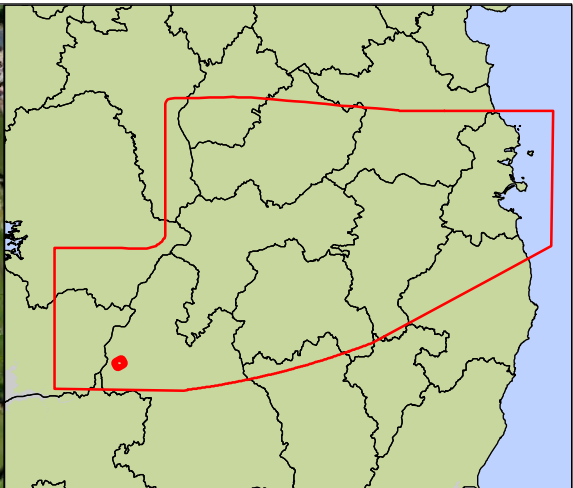
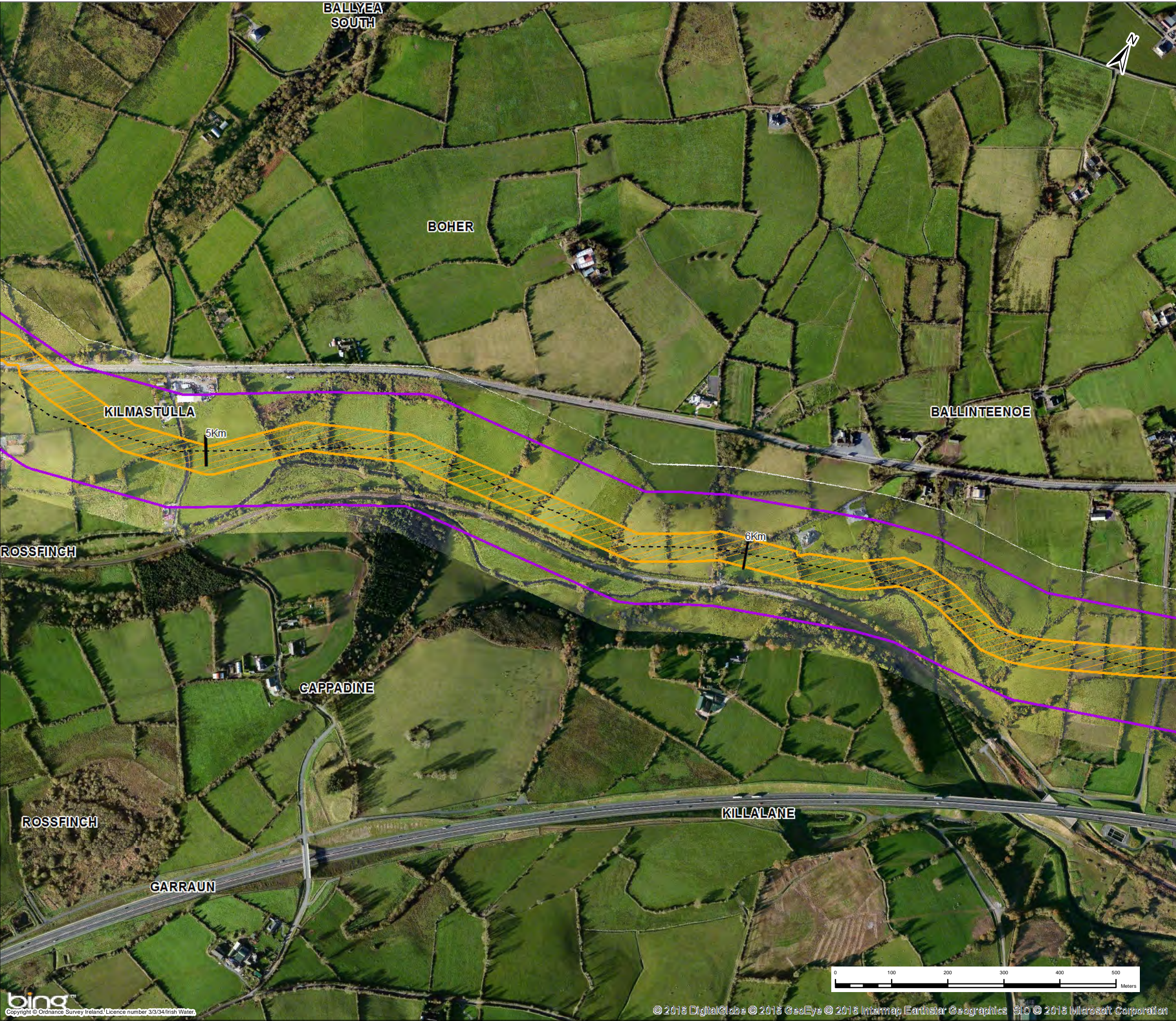
Drawing Title

Preferred 200m Pipeline Corridor and Indicative 50m Pipeline Corridor

Drawing Status	For Issue		
Scale @ A3	1:6,500	DO NOT SCALE	
Jacobs No.	32105801	Client No.	WSP1
Filepath	C:\JACOBS\32105801 - WSP\GIS\25.10.16\32105801-FOAR-102.dwg		
Drawing No.	32105801-FOAR-102		

This drawing is not to be used in whole or in part other than for the intended purpose and project as defined on this drawing. Refer to the contract for full terms and conditions.





**Key**

- Centreline of Preferred 200m Pipeline Corridor
- Indicative 50m Pipeline Corridor
- Preferred 200m Pipeline Corridor
- Least Constrained Termination Point Reservoir Site
- Least Constrained Raw Water Abstraction Site
- Least Constrained Water Treatment Plant Site
- Least Constrained Break Pressure Tank Site

*Note :-  
The Preferred 200m Pipeline Corridor and Indicative 50m Pipeline Corridor Have Been Determined Following an Iterative Process to Define the Least Constrained Pipe Alignment : Refer to Appendix I*

1	21/11/2016	For Issue	PW	CK	DS	MG
Rev.	Date	Purpose of revision	Drawn	Check'd	Rev'd	Appr'd

Client

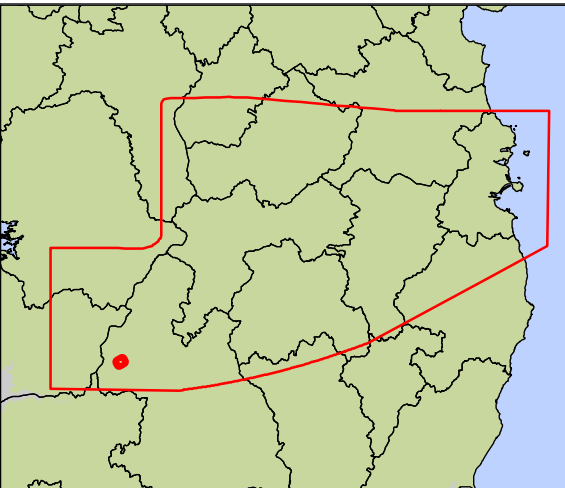
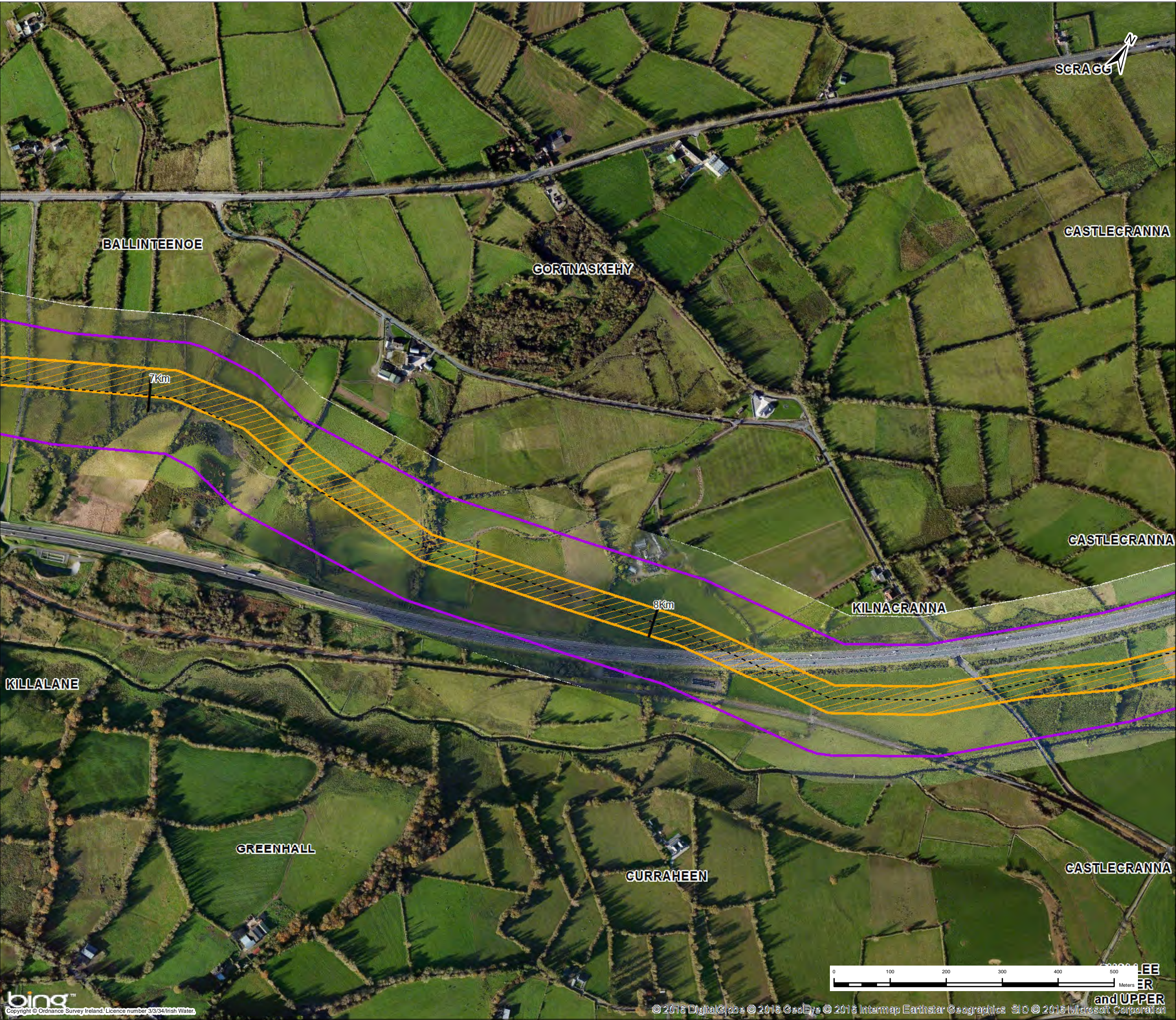
Project  
Water Supply Project - Eastern and Midlands Region

Drawing Title  
Preferred 200m Pipeline Corridor and Indicative 50m Pipeline Corridor

Drawing Status	For Issue		
Scale @ A3	1:6,500	DO NOT SCALE	
Jacobs No.	32105801	Client No.	WSP1
Filepath	C:\GIS\2016\32105801 - WSP\GIS\2016\32105801 - WSP\32105801-FOAR-103.dwg		
Drawing No.	32105801-FOAR-103		

This drawing is not to be used in whole or in part other than for the intended purpose and project as defined on this drawing. Refer to the contract for full terms and conditions.





**Key**

- Centreline of Preferred 200m Pipeline Corridor
- Indicative 50m Pipeline Corridor
- Preferred 200m Pipeline Corridor
- Least Constrained Termination Point Reservoir Site
- Least Constrained Raw Water Abstraction Site
- Least Constrained Water Treatment Plant Site
- Least Constrained Break Pressure Tank Site

*Note :-  
The Preferred 200m Pipeline Corridor and Indicative 50m Pipeline Corridor Have Been Determined Following an Iterative Process to Define the Least Constrained Pipe Alignment : Refer to Appendix I*

1	21/11/2016	For Issue	PW	CK	DS	MG
Rev.	Date	Purpose of revision	Drawn	Check'd	Rev'd	App'd

Client

Project

Water Supply Project - Eastern and Midlands Region

Drawing Title

Preferred 200m Pipeline Corridor and Indicative 50m Pipeline Corridor

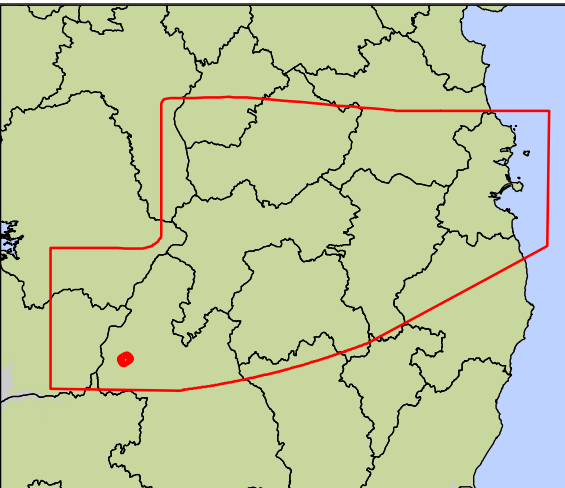
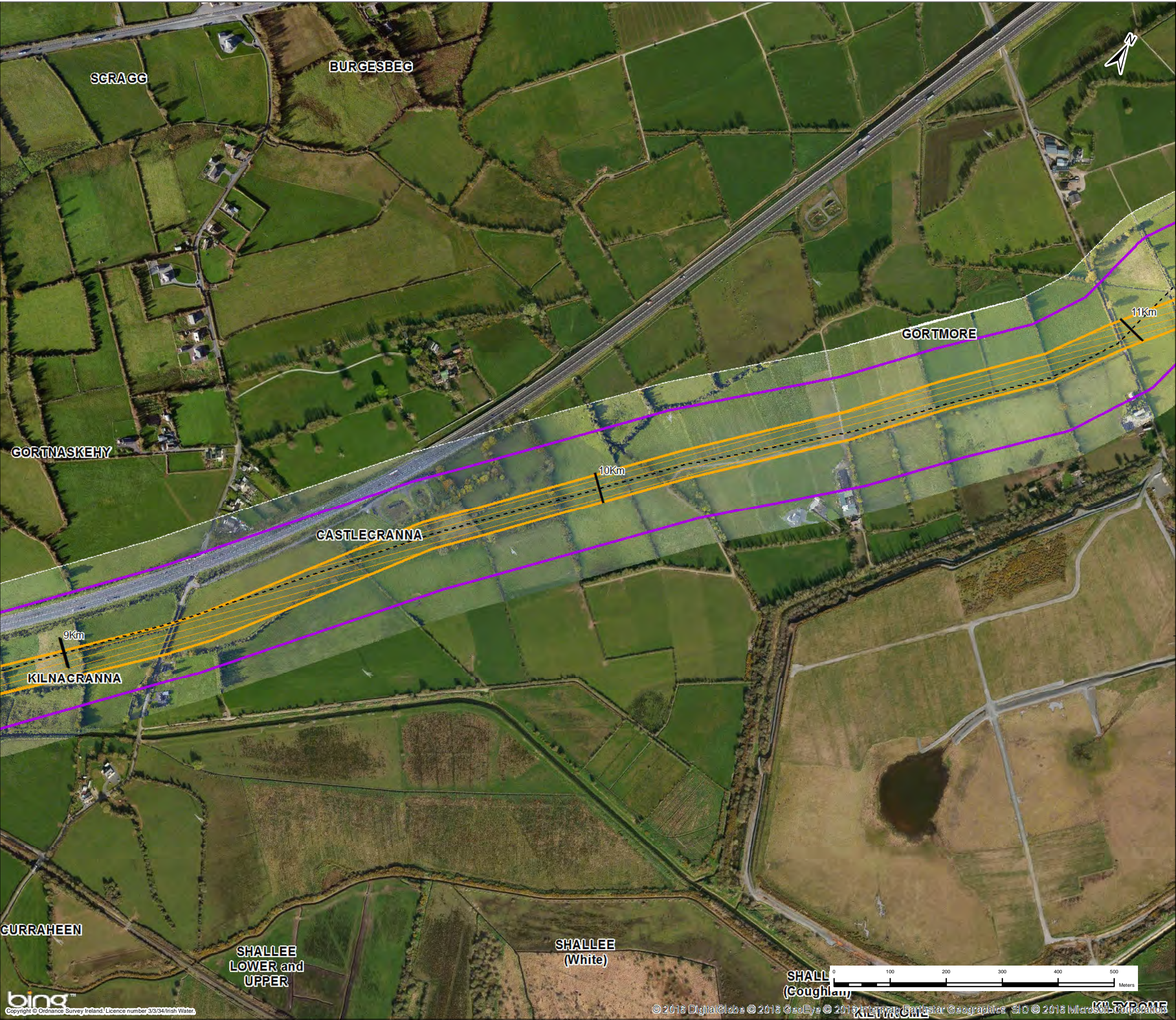
Drawing Status

For Issue

Scale @ A3	1:6,500	DO NOT SCALE	
Jacobs No.	32105801	Client No.	WSP1
Filepath			
Drawing No.			
32105801-FOAR-104			

This drawing is not to be used in whole or in part other than for the intended purpose and project as defined on this drawing. Refer to the contract for full terms and conditions.





**Key**

- Centreline of Preferred 200m Pipeline Corridor
- Indicative 50m Pipeline Corridor
- Preferred 200m Pipeline Corridor
- Least Constrained Termination Point Reservoir Site
- Least Constrained Raw Water Abstraction Site
- Least Constrained Water Treatment Plant Site
- Least Constrained Break Pressure Tank Site

**Note :-**  
The Preferred 200m Pipeline Corridor and Indicative 50m Pipeline Corridor Have Been Determined Following an Iterative Process to Define the Least Constrained Pipe Alignment : Refer to Appendix I

1	21/11/2016	For Issue	PW	CK	DS	MG
Rev.	Date	Purpose of revision	Drawn	Check'd	Rev'd	App'd

Client

Project

Water Supply Project - Eastern and Midlands Region

Drawing Title

Preferred 200m Pipeline Corridor and Indicative 50m Pipeline Corridor

Drawing Status

For Issue

Scale @ A3

1:6,500

DO NOT SCALE

Jacobs No.

32105801

Client No.

WSP1

Filepath

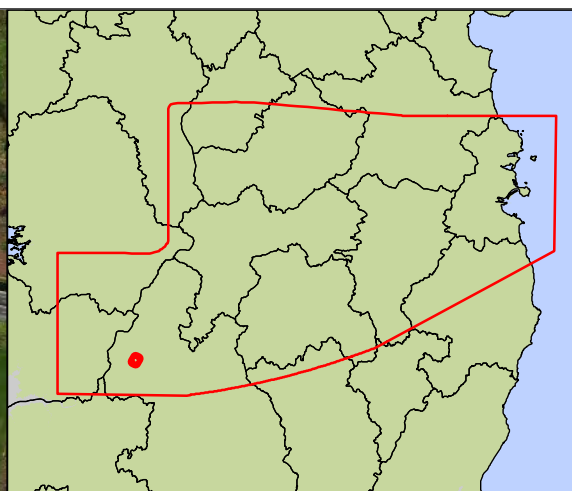
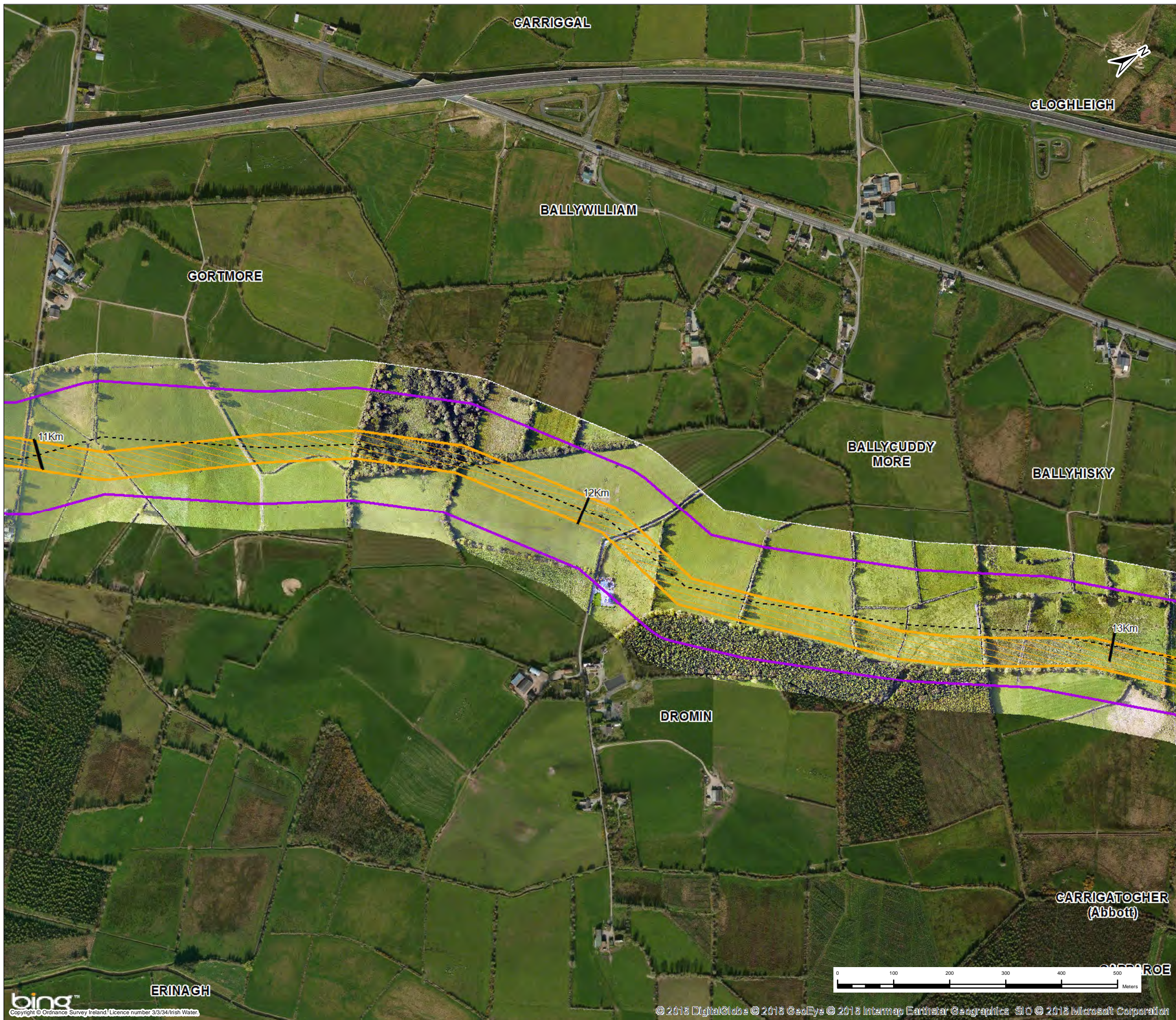
32105801-FOAR-105

Drawing No.

32105801-FOAR-105

This drawing is not to be used in whole or in part other than for the intended purpose and project as defined on this drawing. Refer to the contract for full terms and conditions.





**Key**

- Centreline of Preferred 200m Pipeline Corridor
- Indicative 50m Pipeline Corridor
- Preferred 200m Pipeline Corridor
- Least Constrained Termination Point Reservoir Site
- Least Constrained Raw Water Abstraction Site
- Least Constrained Water Treatment Plant Site
- Least Constrained Break Pressure Tank Site

*Note :-  
The Preferred 200m Pipeline Corridor and Indicative 50m Pipeline Corridor Have Been Determined Following an Iterative Process to Define the Least Constrained Pipe Alignment : Refer to Appendix I*

1	21/11/2016	For Issue	PW	CK	DS	MG
Rev.	Date	Purpose of revision	Drawn	Check'd	Rev'd	App'd

JACOBS

  
Patrick J. Tobin & Co. Ltd.

Client

  
UISCE  
Uisce Éireann, Irish Water

Project

Water Supply Project - Eastern and Midlands Region

Drawing Title

Preferred 200m Pipeline Corridor and Indicative 50m Pipeline Corridor

Drawing Status

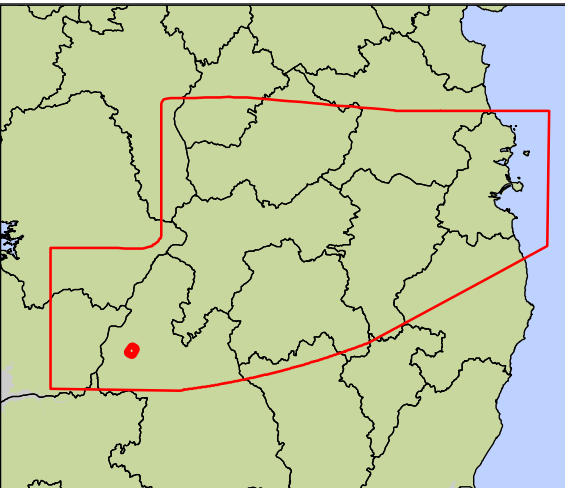
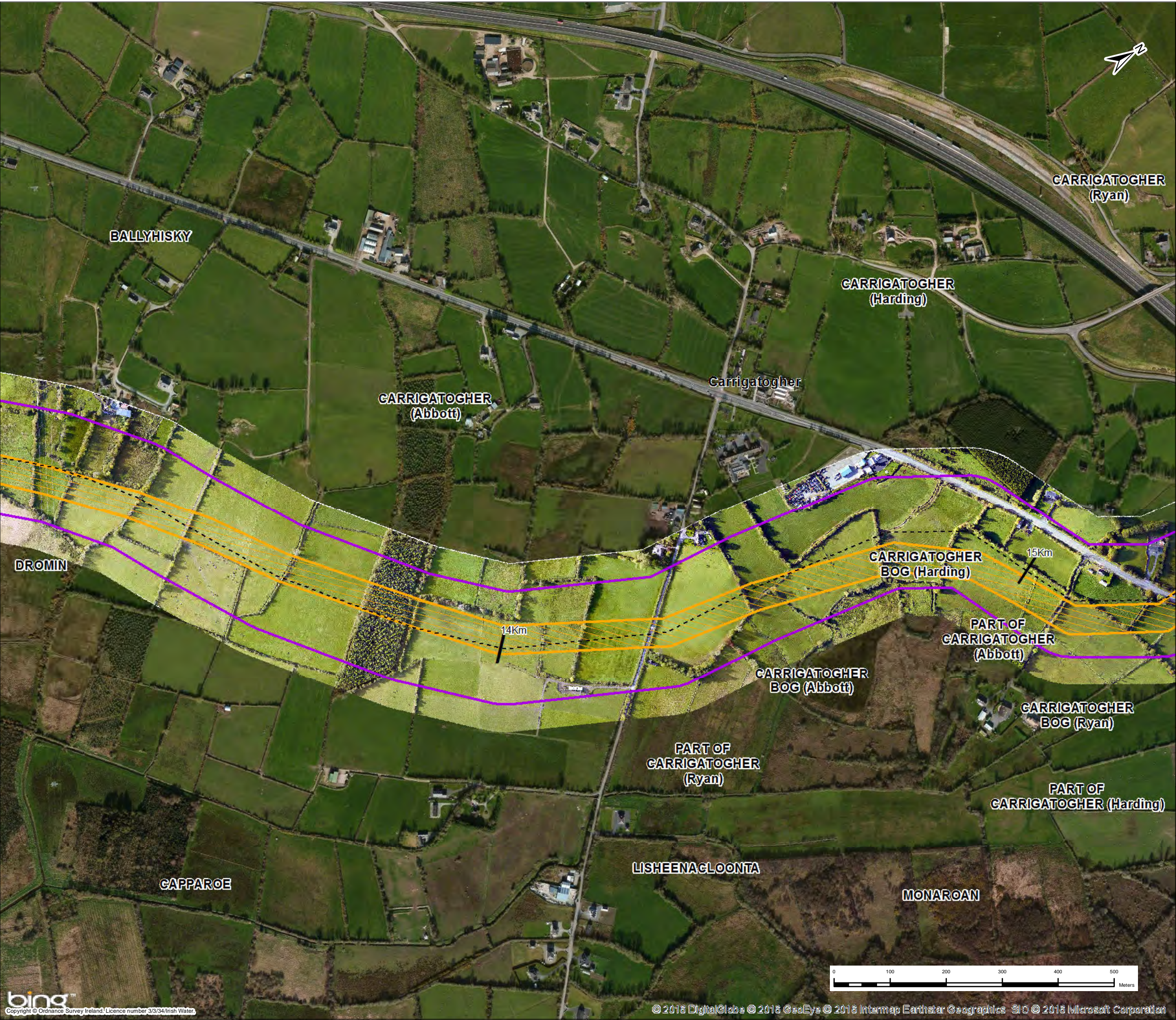
For Issue

Scale @ A3	1:6,500	DO NOT SCALE	
Jacobs No.	32105801	Client No.	WSP1

Filepath	C:\GIS\2016\WSP\WSP-0105801\WSP-0105801-106\WSP-0105801-106-F01.dwg		
Drawing No.	32105801-FOAR-106		

This drawing is not to be used in whole or in part other than for the intended purpose and project as defined on this drawing. Refer to the contract for full terms and conditions.





**Key**

- Centreline of Preferred 200m Pipeline Corridor
- Indicative 50m Pipeline Corridor
- Preferred 200m Pipeline Corridor
- Least Constrained Termination Point Reservoir Site
- Least Constrained Raw Water Abstraction Site
- Least Constrained Water Treatment Plant Site
- Least Constrained Break Pressure Tank Site

*Note :-  
The Preferred 200m Pipeline Corridor and Indicative 50m Pipeline Corridor Have Been Determined Following an Iterative Process to Define the Least Constrained Pipe Alignment : Refer to Appendix I*

1	21/11/2016	For Issue	PW	CK	DS	MG
Rev.	Date	Purpose of revision	Drawn	Check'd	Rev'd	App'd

Client

Project

Water Supply Project - Eastern and Midlands Region

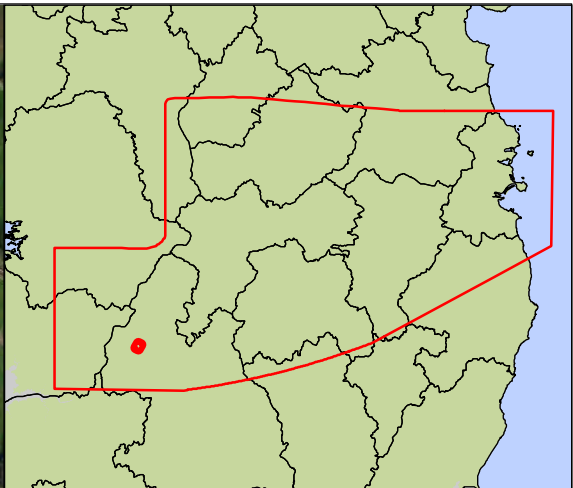
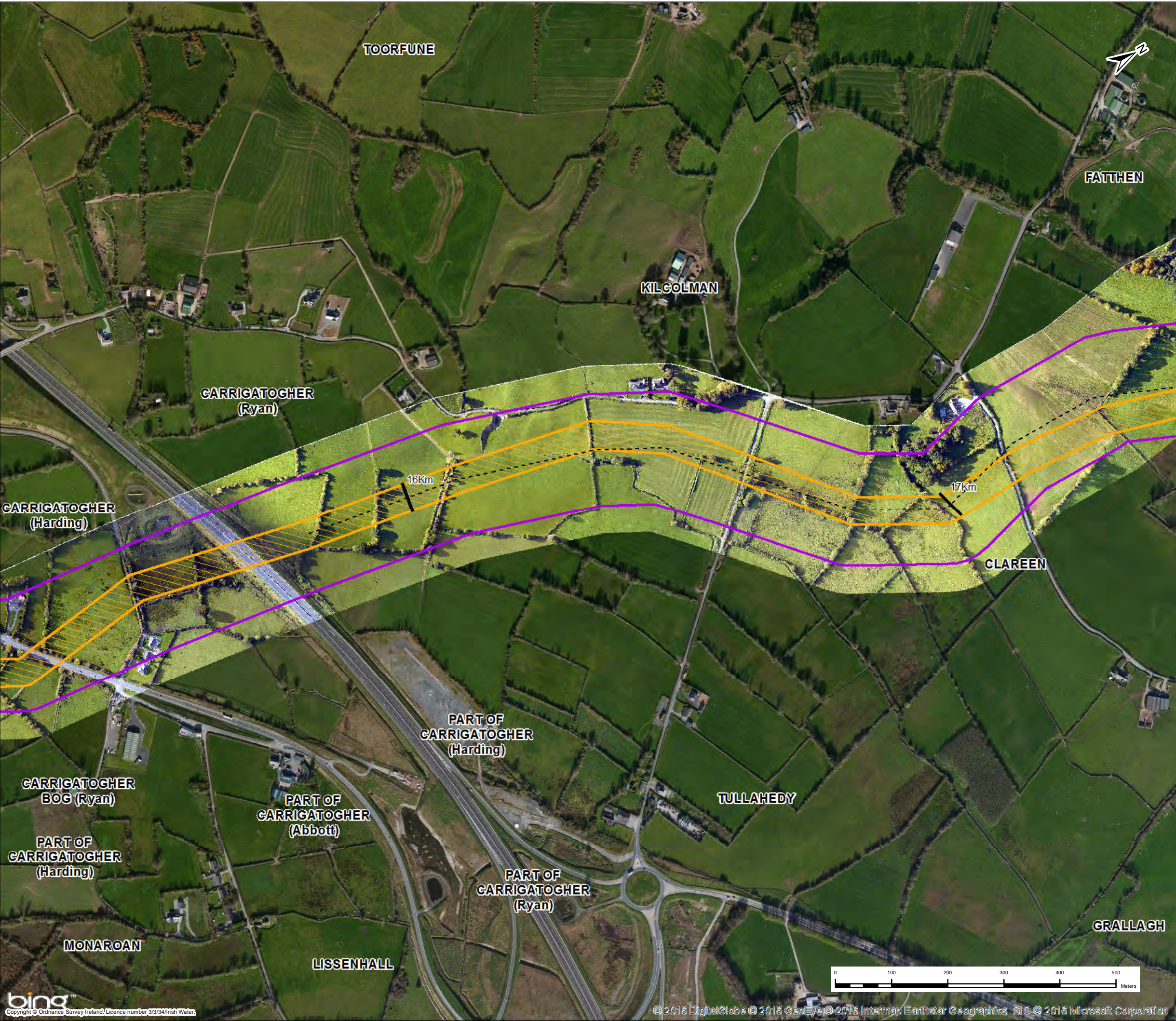
Drawing Title

Preferred 200m Pipeline Corridor and Indicative 50m Pipeline Corridor

Drawing Status				For Issue	
Scale @ A3	1:6,500			DO NOT SCALE	
Jacobs No.	32105801	Client No.	WSP1		
Drawing No. 32105801-FOAR-107					

This drawing is not to be used in whole or in part other than for the intended purpose and project as defined on this drawing. Refer to the contract for full terms and conditions.





- Key**
- Centreline of Preferred 200m Pipeline Corridor
  - Indicative 50m Pipeline Corridor
  - Preferred 200m Pipeline Corridor
  - Least Constrained Termination Point Reservoir Site
  - Least Constrained Raw Water Abstraction Site
  - Least Constrained Water Treatment Plant Site
  - Least Constrained Break Pressure Tank Site

**Note :-**  
The Preferred 200m Pipeline Corridor and Indicative 50m Pipeline Corridor Have Been Determined Following an Iterative Process to Define the Least Constrained Pipe Alignment : Refer to Appendix I

1	21/11/2016	For Issue	PW	CK	DS	MG
Rev.	Date	Purpose of revision	Drawn	Check'd	Rev'd	App'd

Client

Project  
Water Supply Project - Eastern and Midlands Region

Drawing Title  
Preferred 200m Pipeline Corridor and Indicative 50m Pipeline Corridor

Drawing Status  
For Issue

Scale @ A3  
1:6,500

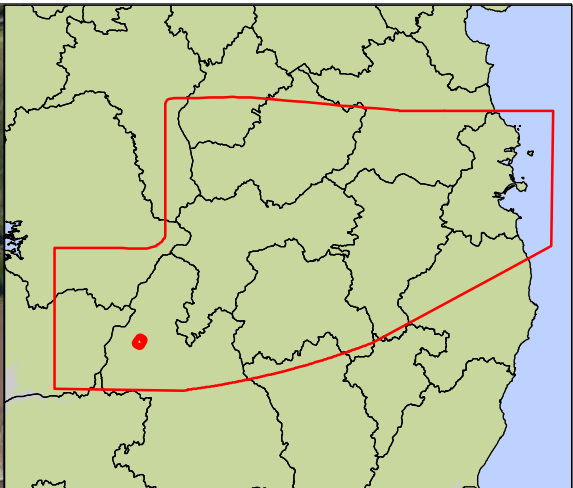
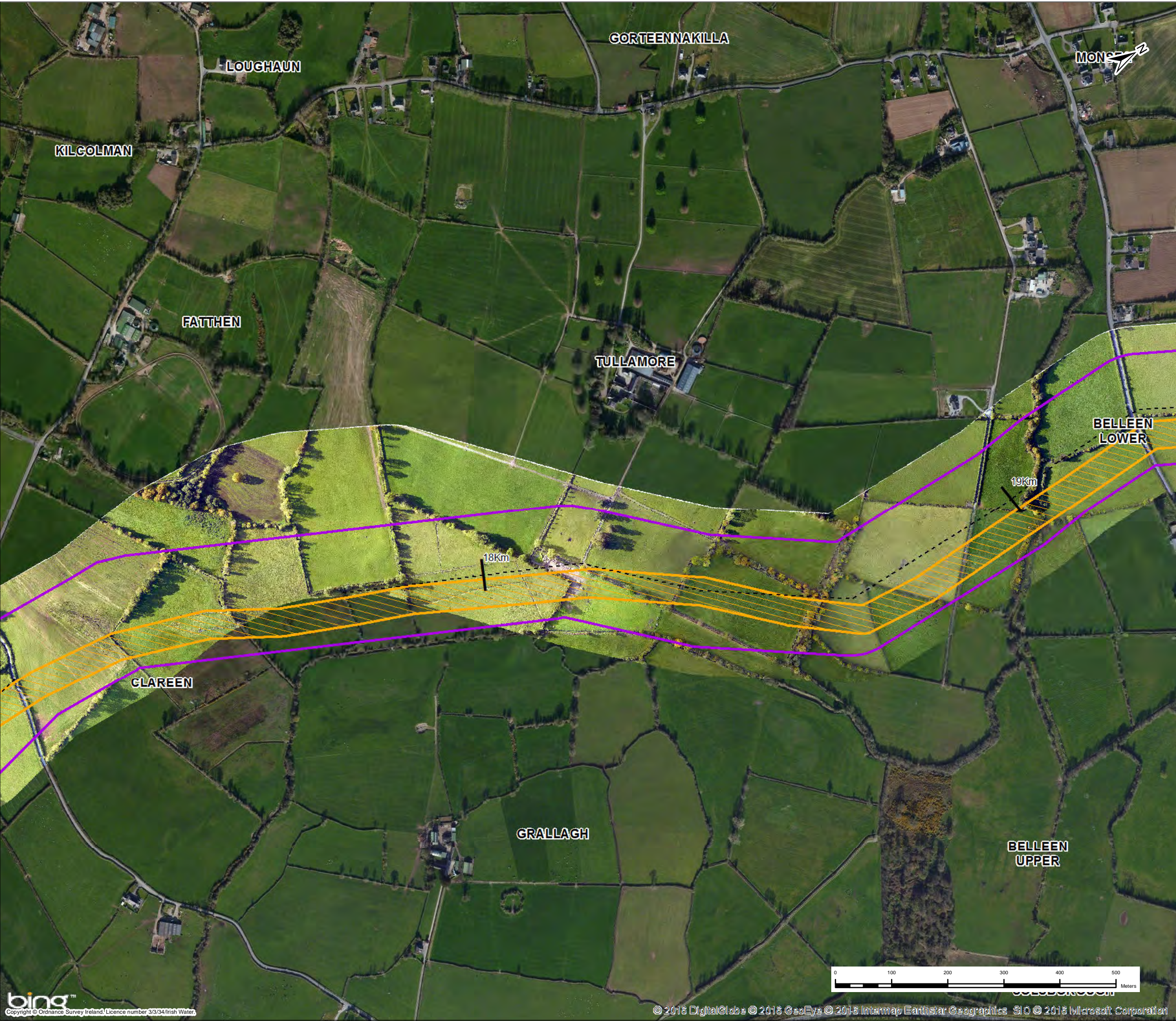
Jacobs No.  
32105801

Client No.  
WSP1

Drawing No.  
32105801-FOAR-108

This drawing is not to be used in whole or in part other than for the intended purpose and project as defined on this drawing. Refer to the contract for full terms and conditions.





**Key**

- Centreline of Preferred 200m Pipeline Corridor
- Indicative 50m Pipeline Corridor
- Preferred 200m Pipeline Corridor
- Least Constrained Termination Point Reservoir Site
- Least Constrained Raw Water Abstraction Site
- Least Constrained Water Treatment Plant Site
- Least Constrained Break Pressure Tank Site

*Note :-  
The Preferred 200m Pipeline Corridor and Indicative 50m Pipeline Corridor Have Been Determined Following an Iterative Process to Define the Least Constrained Pipe Alignment : Refer to Appendix I*

1	21/11/2016	For Issue	PW	CK	DS	MG
Rev.	Date	Purpose of revision	Drawn	Check'd	Rev'd	App'd

Client

Project

Water Supply Project - Eastern and Midlands Region

Drawing Title

Preferred 200m Pipeline Corridor and Indicative 50m Pipeline Corridor

Drawing Status

For Issue

Scale @ A3

1:6,500

DO NOT SCALE

Jacobs No.

32105801

Client No.

WSP1

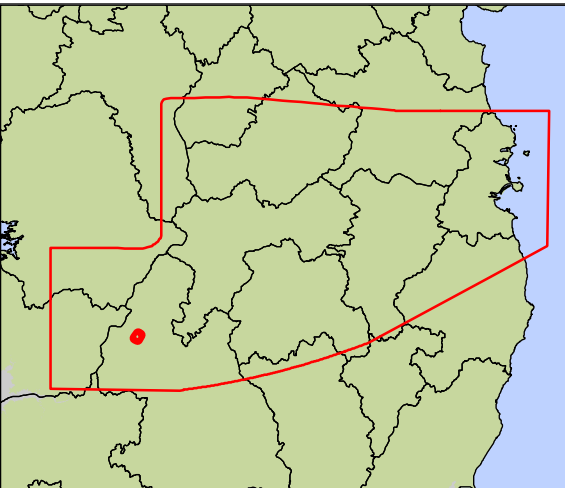
Filepath

Drawing No.

32105801-FOAR-109

This drawing is not to be used in whole or in part other than for the intended purpose and project as defined on this drawing. Refer to the contract for full terms and conditions.





**Key**

- Centreline of Preferred 200m Pipeline Corridor
- Indicative 50m Pipeline Corridor
- Preferred 200m Pipeline Corridor
- Least Constrained Termination Point Reservoir Site
- Least Constrained Raw Water Abstraction Site
- Least Constrained Water Treatment Plant Site
- Least Constrained Break Pressure Tank Site

*Note :-  
The Preferred 200m Pipeline Corridor and Indicative 50m Pipeline Corridor Have Been Determined Following an Iterative Process to Define the Least Constrained Pipe Alignment : Refer to Appendix I*

1	21/11/2016	For Issue	PW	CK	DS	MG
Rev.	Date	Purpose of revision	Drawn	Check'd	Rev'd	App'd

JACOBS

  
Patrick J. Tobin & Co. Ltd.

Client

  
UISCE  
Uisce Éireann, Irish Water

Project

Water Supply Project - Eastern and Midlands Region

Drawing Title

Preferred 200m Pipeline Corridor and Indicative 50m Pipeline Corridor

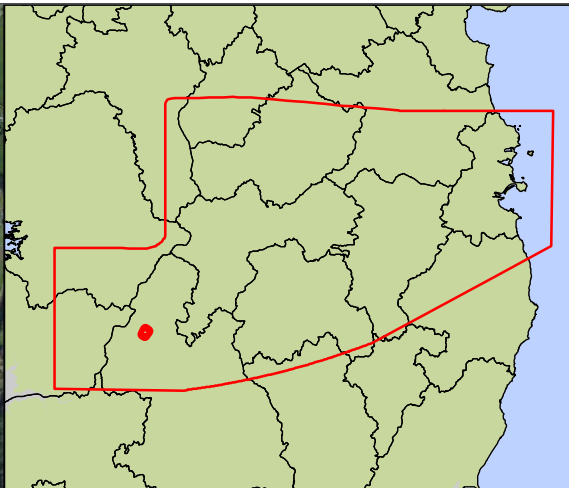
Drawing Status

For Issue

Scale @ A3	1:6,500	DO NOT SCALE	
Jacobs No.	32105801	Client No.	WSP1
Filepath			
Drawing No.			
32105801-FOAR-110			

This drawing is not to be used in whole or in part other than for the intended purpose and project as defined on this drawing. Refer to the contract for full terms and conditions.







**Key**


- Centreline of Preferred 200m Pipeline Corridor
- Indicative 50m Pipeline Corridor
- Preferred 200m Pipeline Corridor
- Least Constrained Termination Point Reservoir Site
- Least Constrained Raw Water Abstraction Site
- Least Constrained Water Treatment Plant Site
- Least Constrained Break Pressure Tank Site

*Note :-  
The Preferred 200m Pipeline Corridor and Indicative 50m Pipeline Corridor Have Been Determined Following an Iterative Process to Define the Least Constrained Pipe Alignment : Refer to Appendix I*

1	21/11/2016	For Issue	PW	CK	DS	MG
Rev.	Date	Purpose of revision	Drawn	Check'd	Rev'd	App'd



Client



Project

Water Supply Project - Eastern and Midlands Region

Drawing Title

Preferred 200m Pipeline Corridor and Indicative 50m Pipeline Corridor

Drawing Status

For Issue

Scale @ A3	1:6,500	DO NOT SCALE	
Jacobs No.	32105801	Client No.	WSP1
Filepath			
Drawing No.			

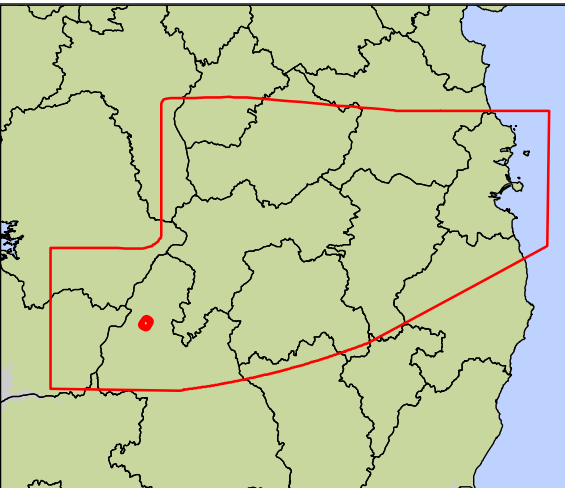
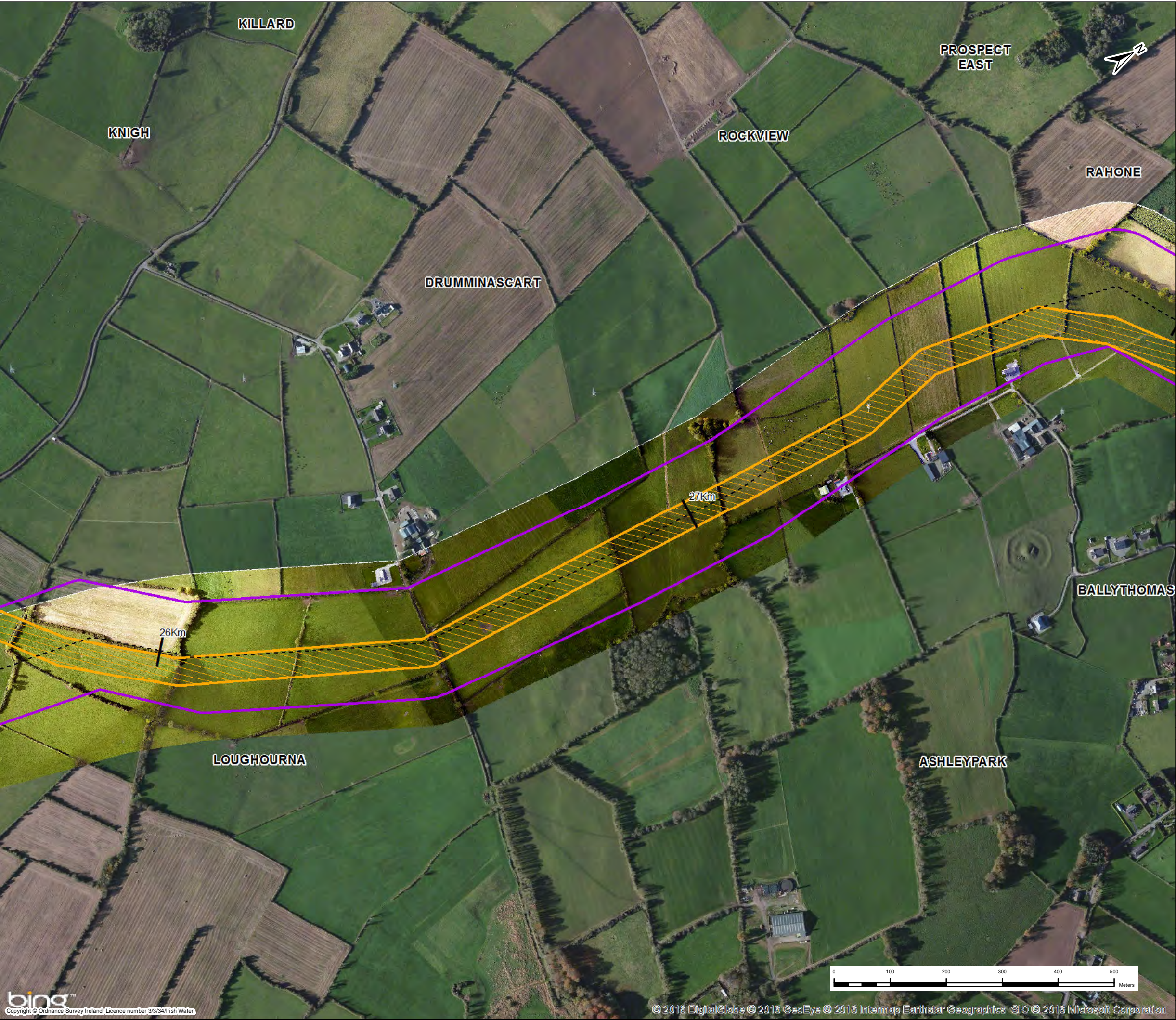
32105801-FOAR-111

This drawing is not to be used in whole or in part other than for the intended purpose and project as defined on this drawing. Refer to the contract for full terms and conditions.









- Key**
- Centreline of Preferred 200m Pipeline Corridor
  - Indicative 50m Pipeline Corridor
  - Preferred 200m Pipeline Corridor
  - Least Constrained Termination Point Reservoir Site
  - Least Constrained Raw Water Abstraction Site
  - Least Constrained Water Treatment Plant Site
  - Least Constrained Break Pressure Tank Site

**Note :-**  
The Preferred 200m Pipeline Corridor and Indicative 50m Pipeline Corridor Have Been Determined Following an Iterative Process to Define the Least Constrained Pipe Alignment : Refer to Appendix I

1	21/11/2016	For Issue	PW	CK	DS	MG
Rev.	Date	Purpose of revision	Drawn	Check'd	Rev'd	App'd



Client



Project

Water Supply Project - Eastern and Midlands Region

Drawing Title

Preferred 200m Pipeline Corridor and Indicative 50m Pipeline Corridor

Drawing Status

For Issue

Scale @ A3

1:6,500

DO NOT SCALE

Jacobs No.

32105801

Client No.

WSP1

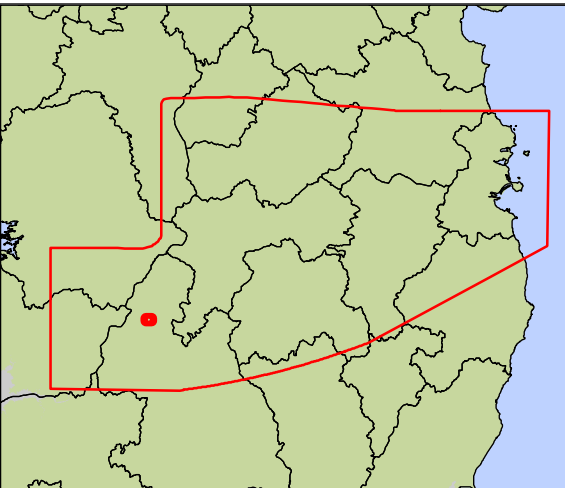
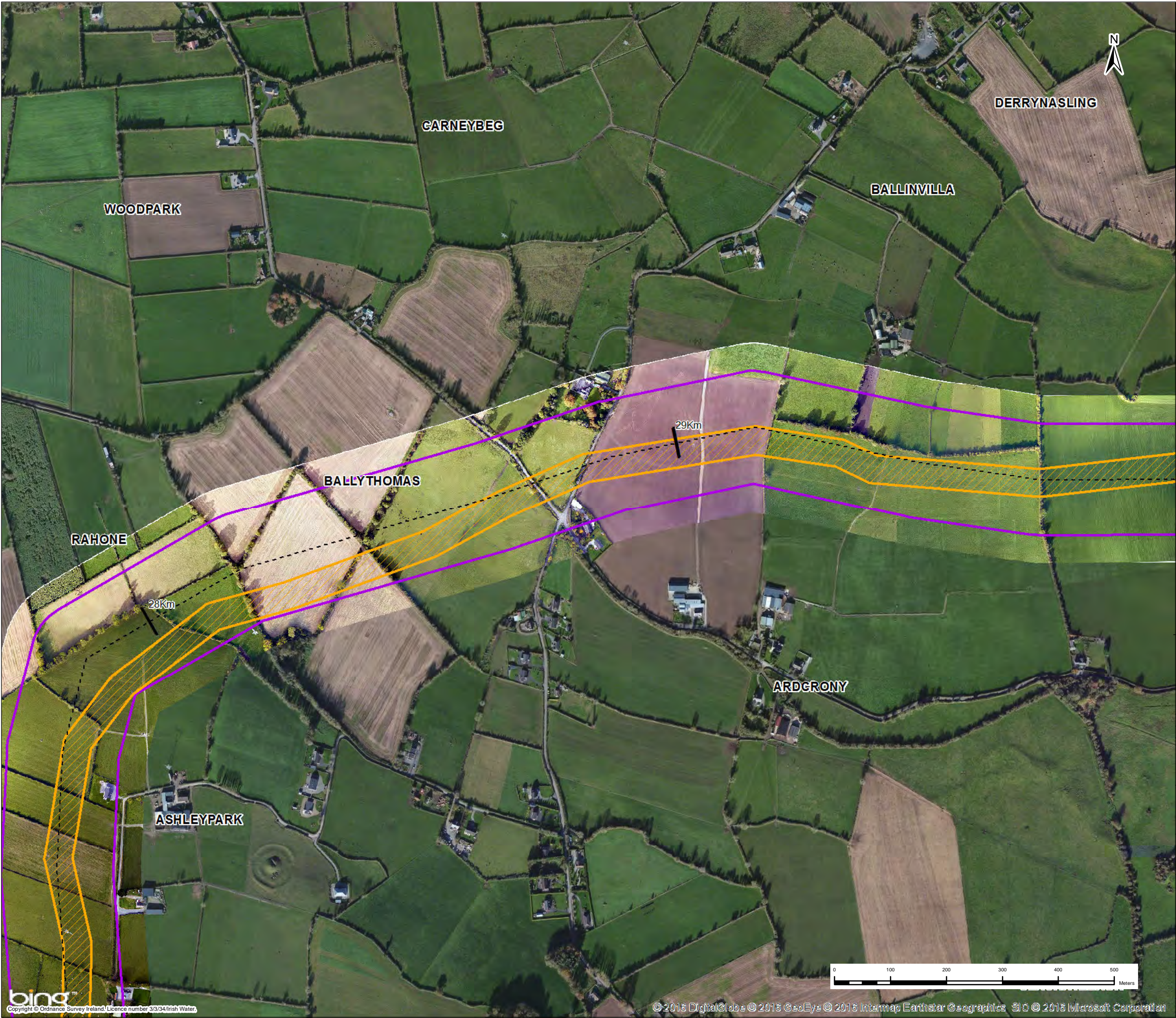
Filepath

Drawing No.

32105801-FOAR-113

This drawing is not to be used in whole or in part other than for the intended purpose and project as defined on this drawing. Refer to the contract for full terms and conditions.





**Key**

- Centreline of Preferred 200m Pipeline Corridor
- Indicative 50m Pipeline Corridor
- Preferred 200m Pipeline Corridor
- Least Constrained Termination Point Reservoir Site
- Least Constrained Raw Water Abstraction Site
- Least Constrained Water Treatment Plant Site
- Least Constrained Break Pressure Tank Site

*Note :-  
The Preferred 200m Pipeline Corridor and Indicative 50m Pipeline Corridor Have Been Determined Following an Iterative Process to Define the Least Constrained Pipe Alignment : Refer to Appendix I*

1	21/11/2016	For Issue	PW	CK	DS	MG
Rev.	Date	Purpose of revision	Drawn	Check'd	Rev'd	App'd

Client

Project

Water Supply Project - Eastern and Midlands Region

Drawing Title

Preferred 200m Pipeline Corridor and Indicative 50m Pipeline Corridor

Drawing Status

For Issue

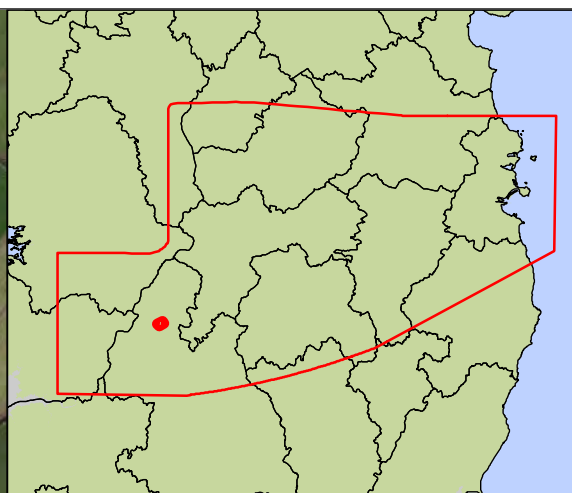
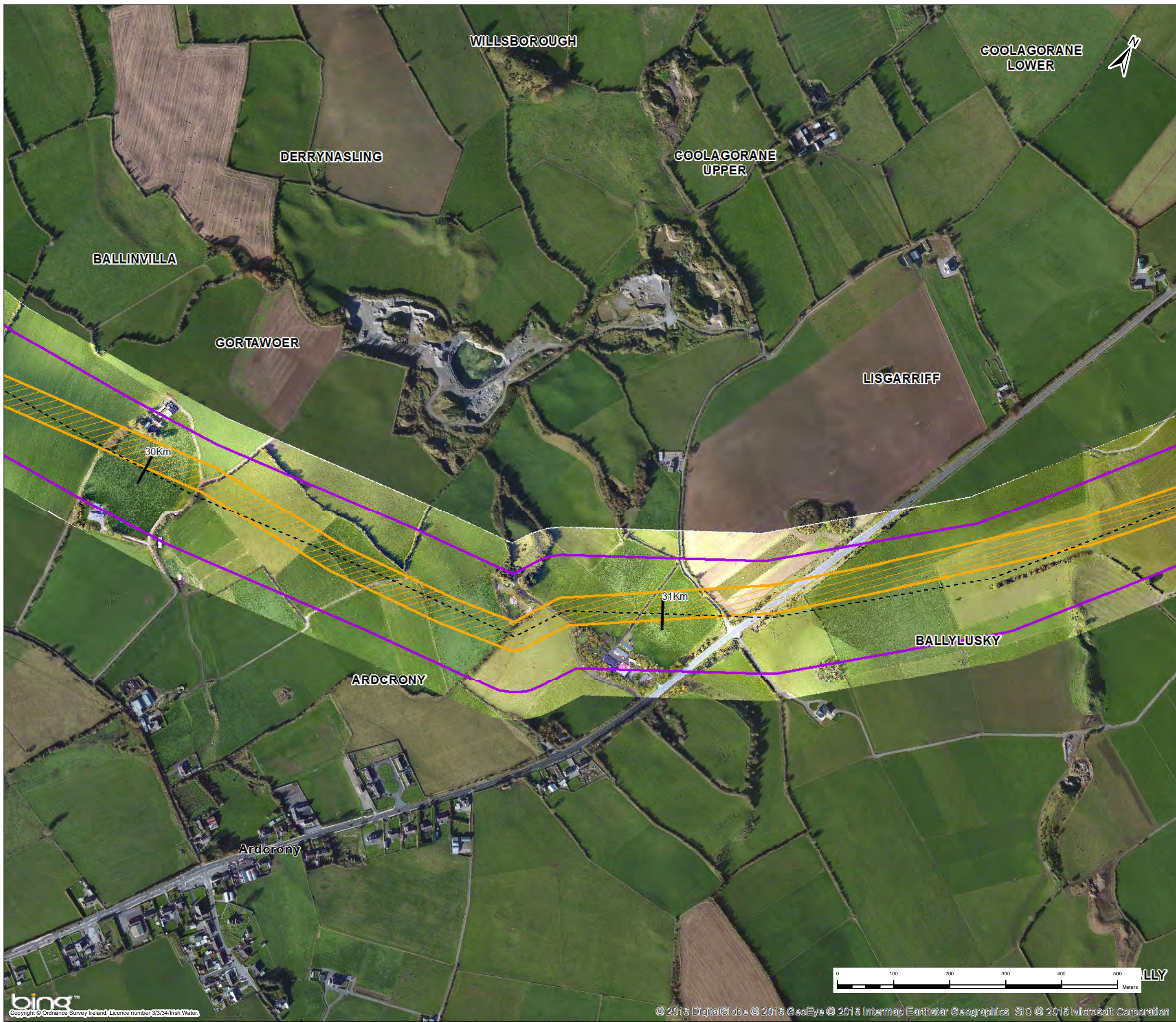
Scale @ A3	1:6,500	DO NOT SCALE	
Jacobs No.	32105801	Client No.	WSP1

Filepath

Drawing No. 32105801-FOAR-114

This drawing is not to be used in whole or in part other than for the intended purpose and project as defined on this drawing. Refer to the contract for full terms and conditions.





**Key**

- Centreline of Preferred 200m Pipeline Corridor
- Indicative 50m Pipeline Corridor
- Preferred 200m Pipeline Corridor
- Least Constrained Termination Point Reservoir Site
- Least Constrained Raw Water Abstraction Site
- Least Constrained Water Treatment Plant Site
- Least Constrained Break Pressure Tank Site

**Note :-**  
The Preferred 200m Pipeline Corridor and Indicative 50m Pipeline Corridor Have Been Determined Following an Iterative Process to Define the Least Constrained Pipe Alignment : Refer to Appendix I

1	21/11/2016	For Issue	PW	CK	DS	MG
Rev.	Date	Purpose of revision	Drawn	Check'd	Rev'd	App'd

Client

Project

Water Supply Project - Eastern and Midlands Region

Drawing Title

Preferred 200m Pipeline Corridor and Indicative 50m Pipeline Corridor

Drawing Status

**For Issue**

Scale @ A3 1:6,500 DO NOT SCALE

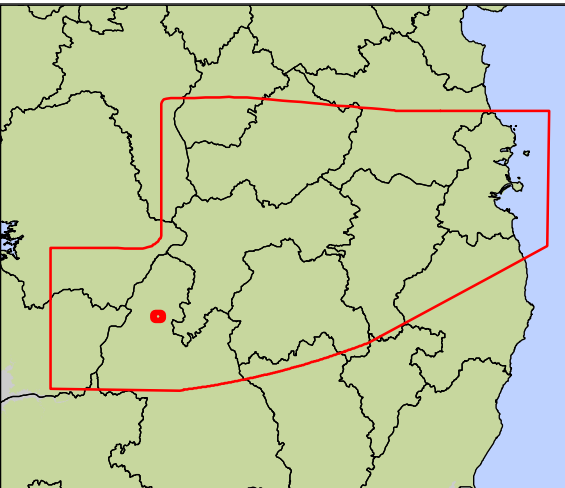
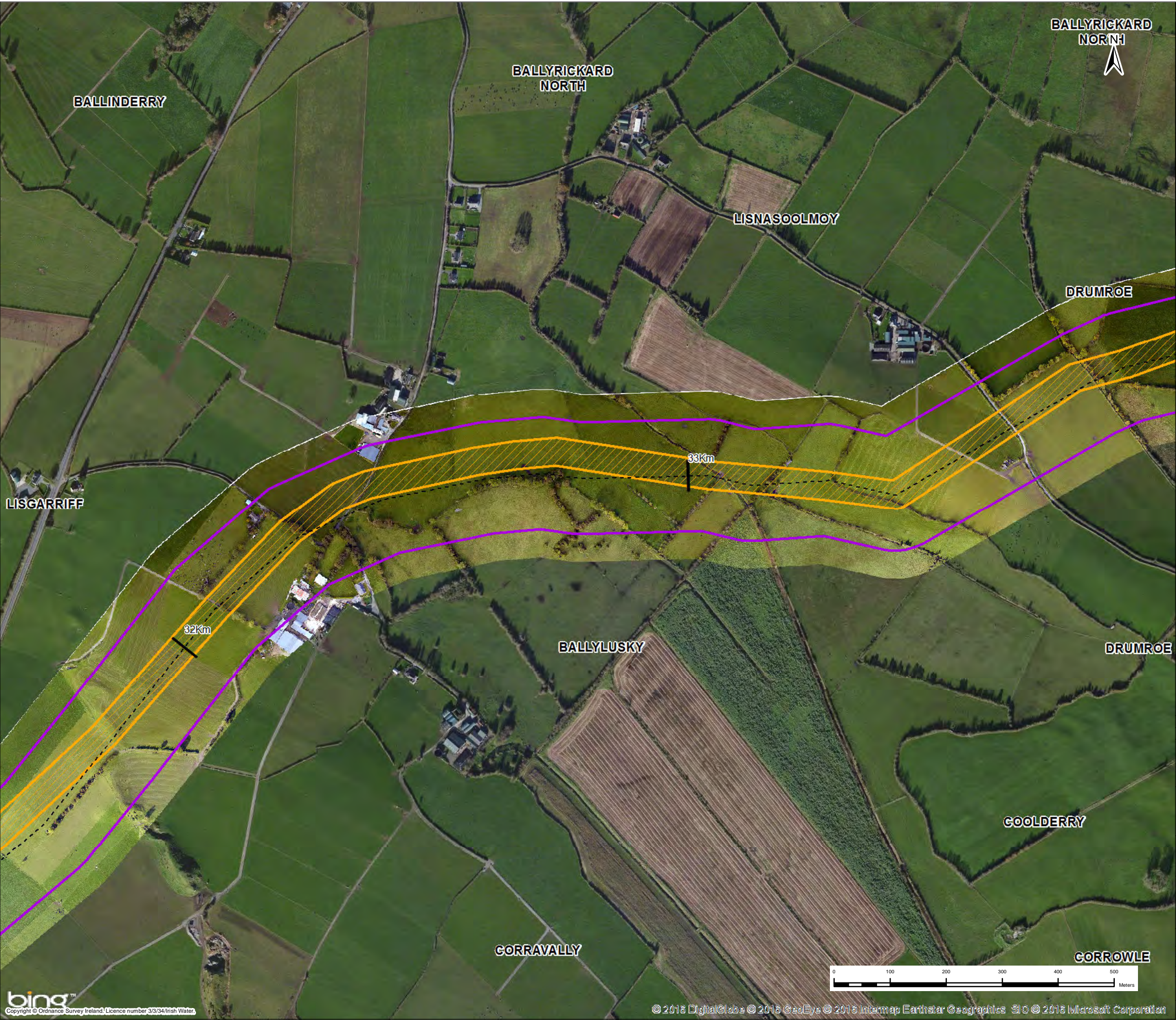
Jacobs No. 32105801 Client No. WSP1

Filepath

Drawing No. 32105801-FOAR-115

This drawing is not to be used in whole or in part other than for the intended purpose and project as defined on this drawing. Refer to the contract for full terms and conditions.





**Key**

- Centreline of Preferred 200m Pipeline Corridor
- Indicative 50m Pipeline Corridor
- Preferred 200m Pipeline Corridor
- Least Constrained Termination Point Reservoir Site
- Least Constrained Raw Water Abstraction Site
- Least Constrained Water Treatment Plant Site
- Least Constrained Break Pressure Tank Site

*Note :-  
The Preferred 200m Pipeline Corridor and Indicative 50m Pipeline Corridor Have Been Determined Following an Iterative Process to Define the Least Constrained Pipe Alignment : Refer to Appendix I*

1	21/11/2016	For Issue	PW	CK	DS	MG
Rev.	Date	Purpose of revision	Drawn	Check'd	Rev'd	App'd

Client

Project

Water Supply Project - Eastern and Midlands Region

Drawing Title

Preferred 200m Pipeline Corridor and Indicative 50m Pipeline Corridor

Drawing Status

For Issue

Scale @ A3

1:6,500

DO NOT SCALE

Jacobs No.

32105801

Client No.

WSP1

Filepath

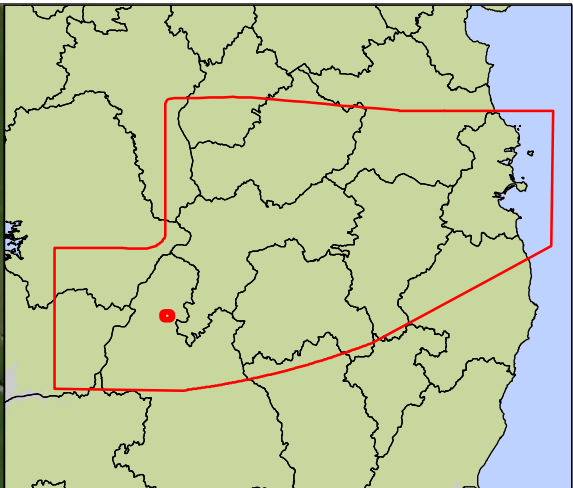
© 2016 DigitalGlobe © 2016 GeoEye © 2016 Intermap Earthstar Geographics SIO © 2016 Microsoft Corporation

Drawing No.

32105801-FOAR-116

This drawing is not to be used in whole or in part other than for the intended purpose and project as defined on this drawing. Refer to the contract for full terms and conditions.





**Key**

- Centreline of Preferred 200m Pipeline Corridor
- Indicative 50m Pipeline Corridor
- Preferred 200m Pipeline Corridor
- Least Constrained Termination Point Reservoir Site
- Least Constrained Raw Water Abstraction Site
- Least Constrained Water Treatment Plant Site
- Least Constrained Break Pressure Tank Site

*Note :-  
The Preferred 200m Pipeline Corridor and Indicative 50m Pipeline Corridor Have Been Determined Following an Iterative Process to Define the Least Constrained Pipe Alignment : Refer to Appendix I*

1	21/11/2016	For Issue	PW	CK	DS	MG
Rev.	Date	Purpose of revision	Drawn	Check'd	Rev'd	Appr'd

Client

Project

Water Supply Project - Eastern and Midlands Region

Drawing Title

Preferred 200m Pipeline Corridor and Indicative 50m Pipeline Corridor

Drawing Status

For Issue

Scale @ A3

1:6,500

DO NOT SCALE

Jacobs No.

32105801

Client No.

WSP1

Filepath

32105801-FOAR-117

Drawing No.

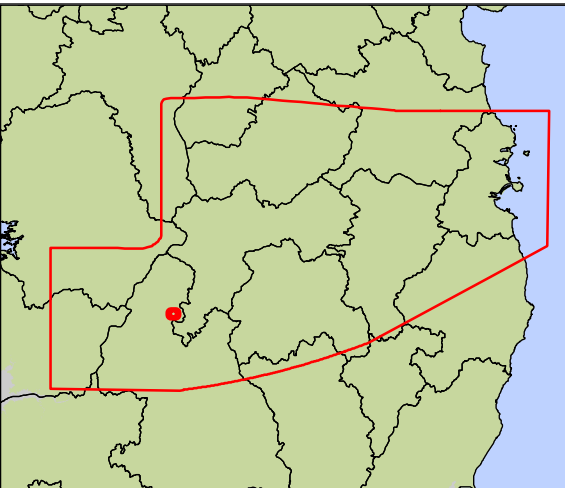
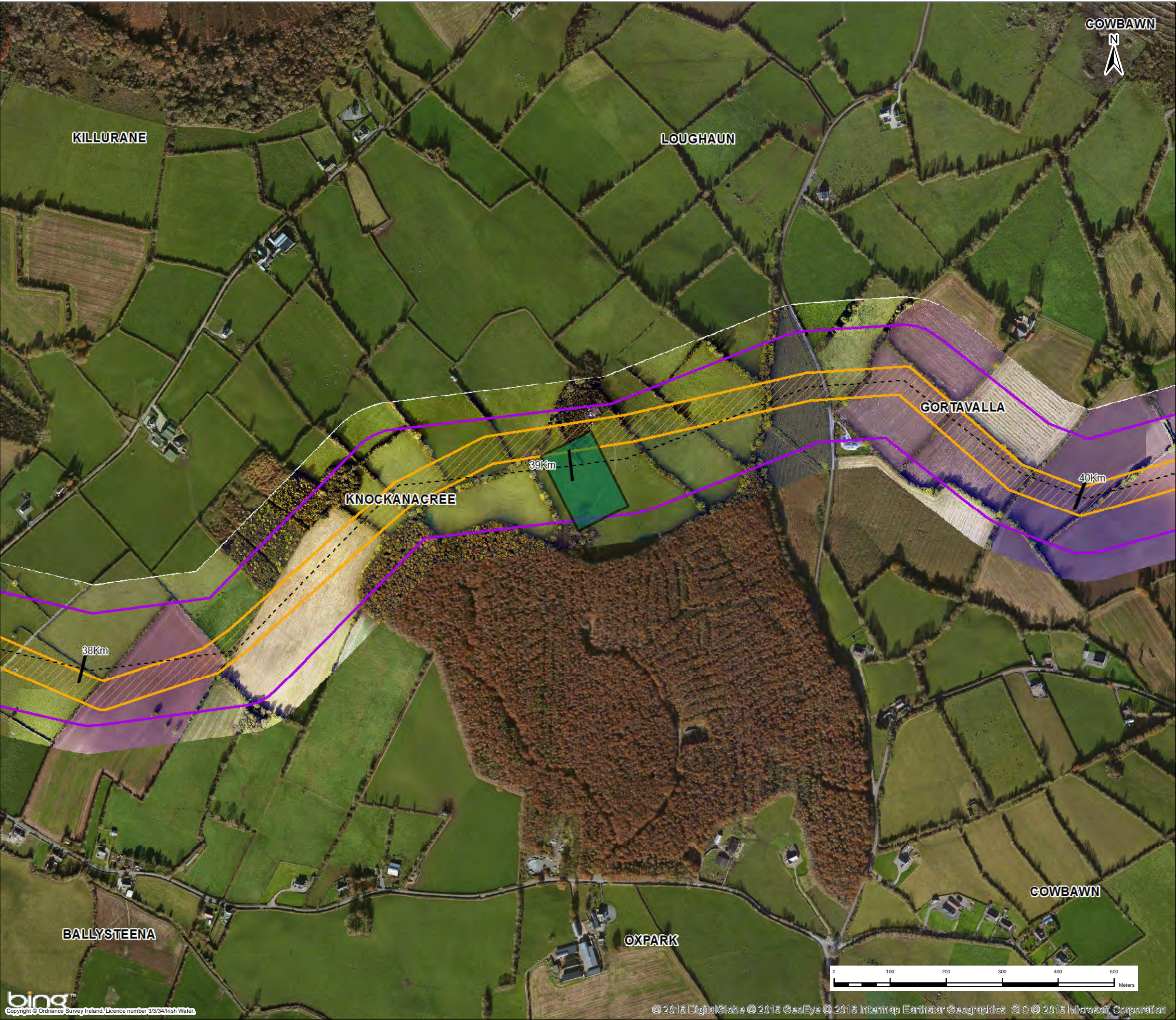
32105801-FOAR-117

This drawing is not to be used in whole or in part other than for the intended purpose and project as defined on this drawing. Refer to the contract for full terms and conditions.









**Key**

- Centreline of Preferred 200m Pipeline Corridor
- Indicative 50m Pipeline Corridor
- Preferred 200m Pipeline Corridor
- Least Constrained Termination Point Reservoir Site
- Least Constrained Raw Water Abstraction Site
- Least Constrained Water Treatment Plant Site
- Least Constrained Break Pressure Tank Site

*Note :-  
The Preferred 200m Pipeline Corridor and Indicative 50m Pipeline Corridor Have Been Determined Following an Iterative Process to Define the Least Constrained Pipe Alignment : Refer to Appendix I*

1	21/11/2016	For Issue	PW	CK	DS	MG
Rev.	Date	Purpose of revision	Drawn	Check'd	Rev'd	Appr'd

JACOBS

  
Patrick J. Tobin & Co. Ltd.

Client

  
UISCE  
Uisce Éireann, Irish Water

Project

Water Supply Project - Eastern and Midlands Region

Drawing Title

Preferred 200m Pipeline Corridor and Indicative 50m Pipeline Corridor

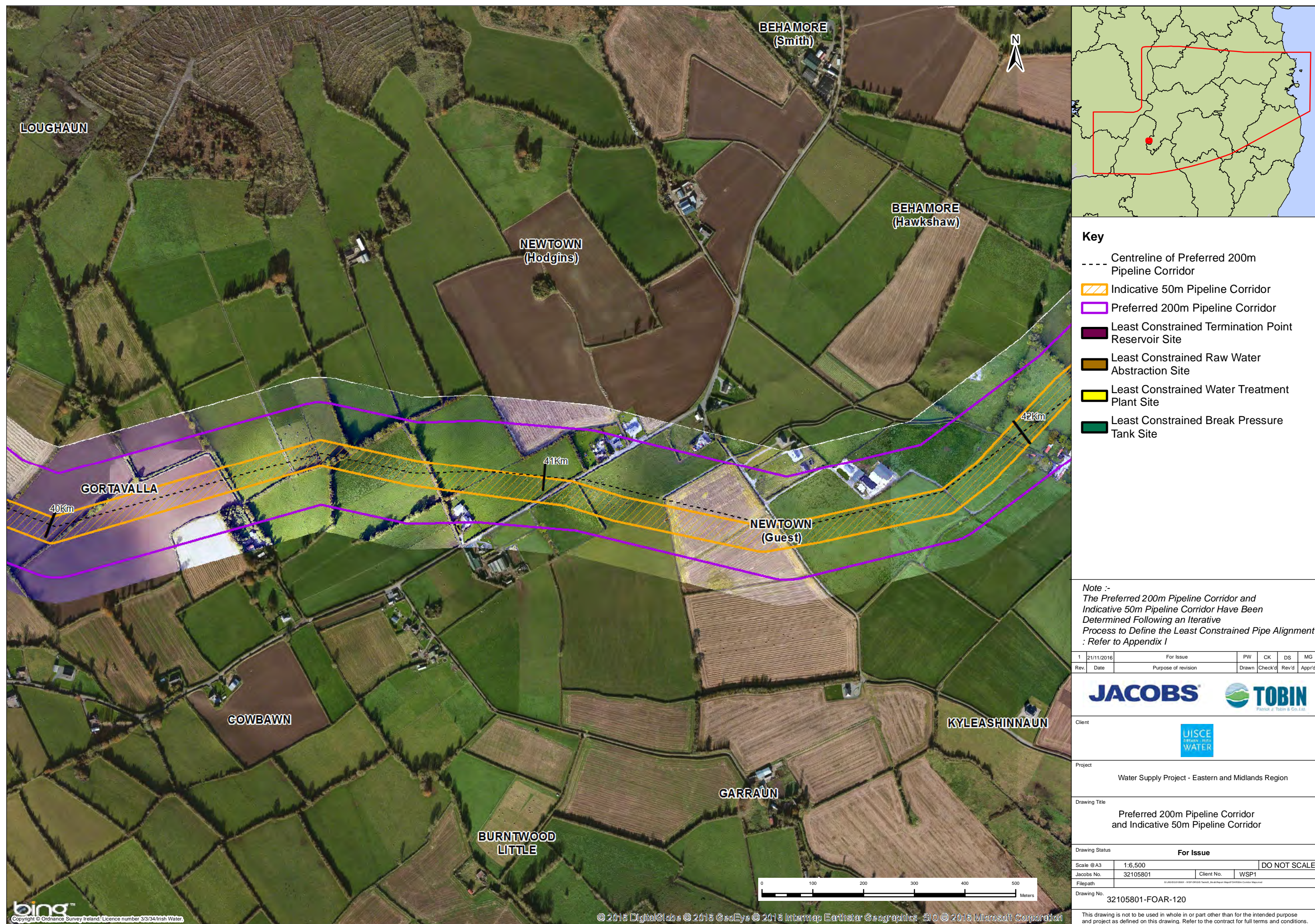
Drawing Status

For Issue

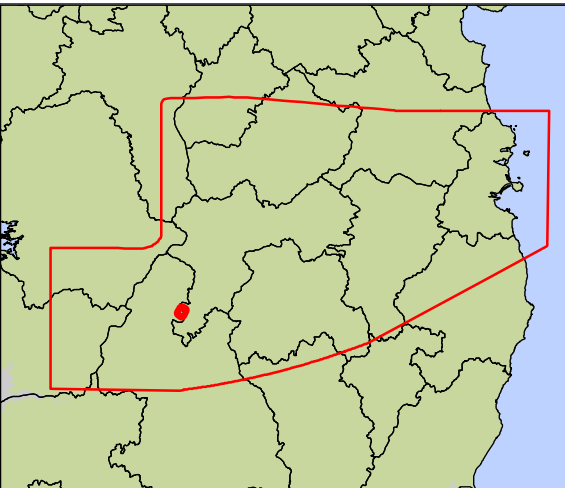
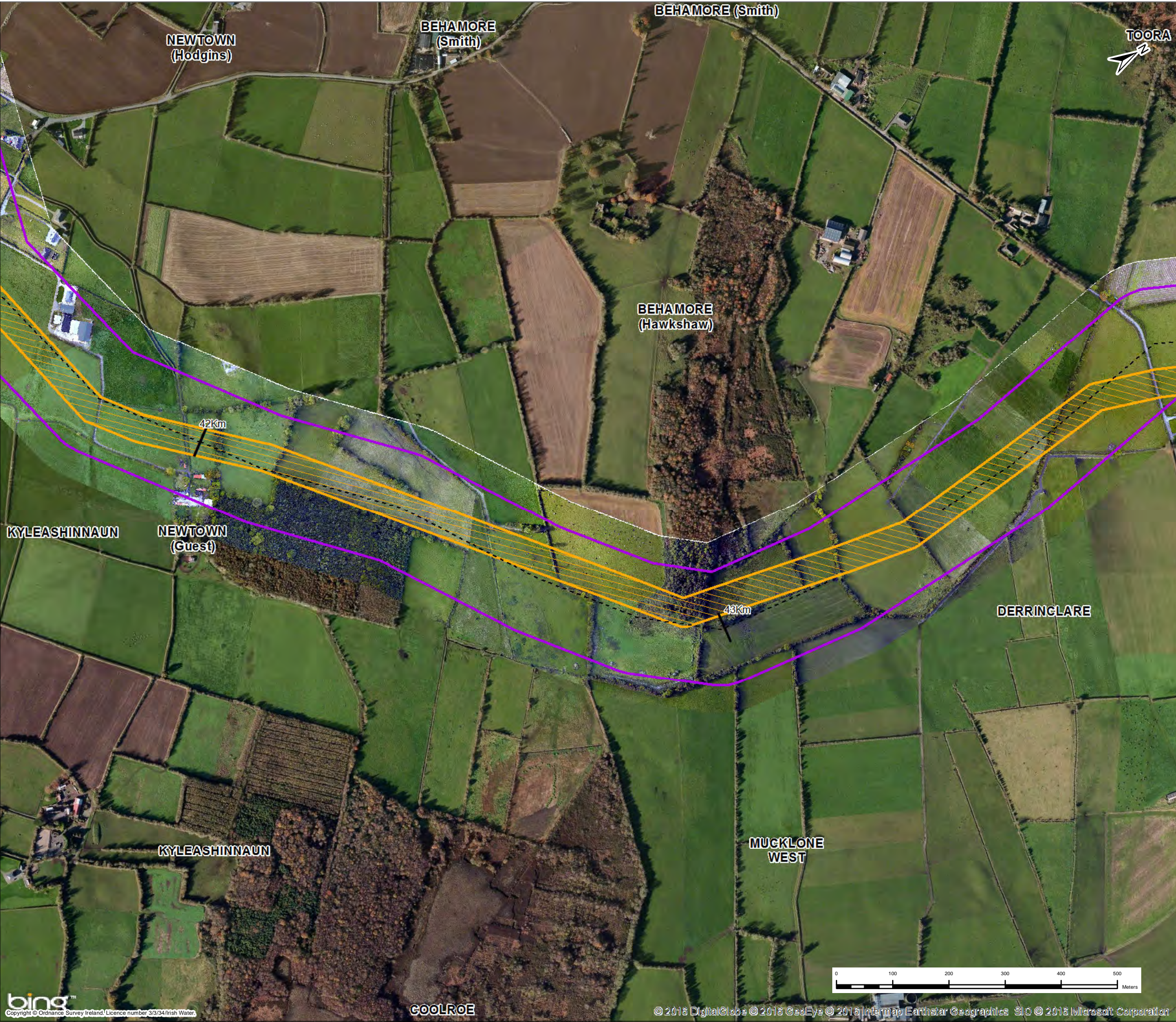
Scale @ A3	1:6,500	DO NOT SCALE	
Jacobs No.	32105801	Client No.	WSP1
Filepath	C:\JACOBS\32105801 - WSP\GIS\2016\Tobin - Water Supply Map\Preferred 200m Corridor Map.dwg		
Drawing No.	32105801-FOAR-119		

This drawing is not to be used in whole or in part other than for the intended purpose and project as defined on this drawing. Refer to the contract for full terms and conditions.









**Key**

- Centreline of Preferred 200m Pipeline Corridor
- Indicative 50m Pipeline Corridor
- Preferred 200m Pipeline Corridor
- Least Constrained Termination Point Reservoir Site
- Least Constrained Raw Water Abstraction Site
- Least Constrained Water Treatment Plant Site
- Least Constrained Break Pressure Tank Site

*Note :-  
The Preferred 200m Pipeline Corridor and Indicative 50m Pipeline Corridor Have Been Determined Following an Iterative Process to Define the Least Constrained Pipe Alignment : Refer to Appendix I*

1	21/11/2016	For Issue	PW	CK	DS	MG
Rev.	Date	Purpose of revision	Drawn	Check'd	Rev'd	App'd

Client

Project

Water Supply Project - Eastern and Midlands Region

Drawing Title

Preferred 200m Pipeline Corridor and Indicative 50m Pipeline Corridor

Drawing Status

For Issue

Scale @ A3

1:6,500

DO NOT SCALE

Jacobs No.

32105801

Client No.

WSP1

Filepath

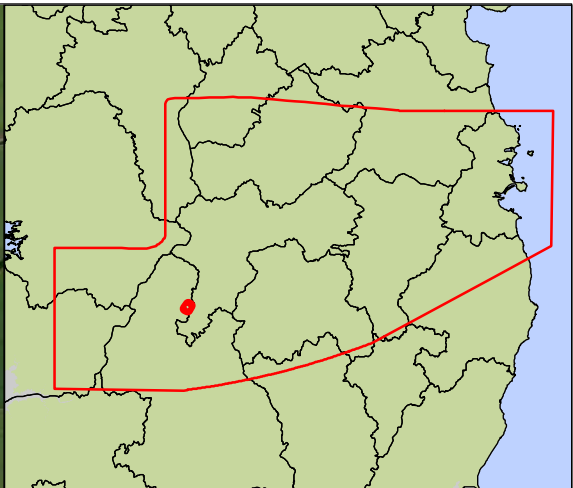
C:\GIS\2016\WSP\01\005\Tobin\32105801\WSP\01\005\Tobin\32105801-F01.dwg

Drawing No.

32105801-FOAR-121

This drawing is not to be used in whole or in part other than for the intended purpose and project as defined on this drawing. Refer to the contract for full terms and conditions.





**Key**

- Centreline of Preferred 200m Pipeline Corridor
- Indicative 50m Pipeline Corridor
- Preferred 200m Pipeline Corridor
- Least Constrained Termination Point Reservoir Site
- Least Constrained Raw Water Abstraction Site
- Least Constrained Water Treatment Plant Site
- Least Constrained Break Pressure Tank Site

*Note :-  
The Preferred 200m Pipeline Corridor and Indicative 50m Pipeline Corridor Have Been Determined Following an Iterative Process to Define the Least Constrained Pipe Alignment : Refer to Appendix I*

1	21/11/2016	For Issue	PW	CK	DS	MG
Rev.	Date	Purpose of revision	Drawn	Check'd	Rev'd	App'd

Client

Project

Water Supply Project - Eastern and Midlands Region

Drawing Title

Preferred 200m Pipeline Corridor and Indicative 50m Pipeline Corridor

Drawing Status

**For Issue**

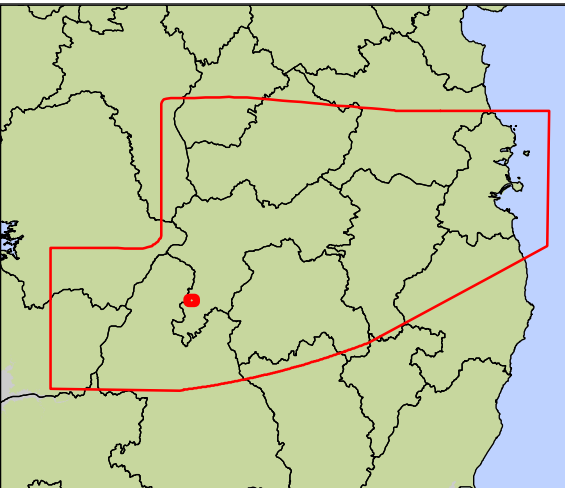
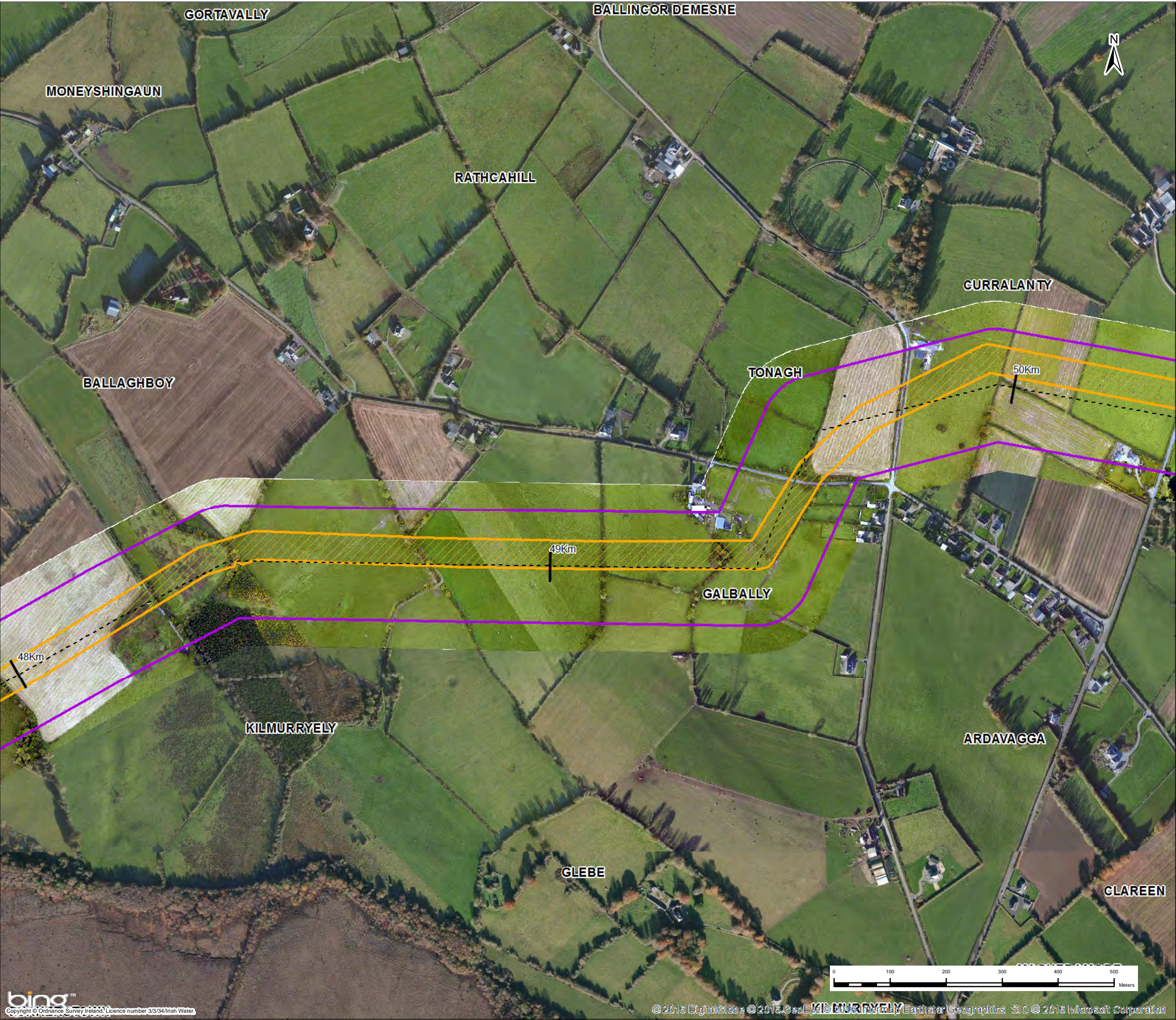
Scale @ A3	1:6,500	DO NOT SCALE	
Jacobs No.	32105801	Client No.	WSP1
Filepath			
Drawing No.			
32105801-FOAR-122			

This drawing is not to be used in whole or in part other than for the intended purpose and project as defined on this drawing. Refer to the contract for full terms and conditions.









- Key**
- Centreline of Preferred 200m Pipeline Corridor
  - Indicative 50m Pipeline Corridor
  - Preferred 200m Pipeline Corridor
  - Least Constrained Termination Point Reservoir Site
  - Least Constrained Raw Water Abstraction Site
  - Least Constrained Water Treatment Plant Site
  - Least Constrained Break Pressure Tank Site

**Note :-**  
The Preferred 200m Pipeline Corridor and Indicative 50m Pipeline Corridor Have Been Determined Following an Iterative Process to Define the Least Constrained Pipe Alignment : Refer to Appendix I

1	21/11/2016	For Issue	PW	CK	DS	MG
Rev.	Date	Purpose of revision	Drawn	Check'd	Rev'd	App'd

Client

Project

Water Supply Project - Eastern and Midlands Region

Drawing Title

Preferred 200m Pipeline Corridor and Indicative 50m Pipeline Corridor

Drawing Status

For Issue

Scale @ A3

1:6,500

DO NOT SCALE

Jacobs No.

32105801

Client No.

WSP1

Drawing No.

32105801-FOAR-124

This drawing is not to be used in whole or in part other than for the intended purpose and project as defined on this drawing. Refer to the contract for full terms and conditions.